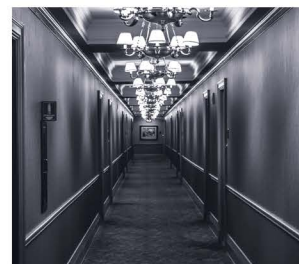


the best venues
prefer
SONODYNE®



INSTALL
SOLUTIONS *Dec 2019*





ACCESSORIES

Contractor Tools	24
Speedrack	24

ACTIVE SPEAKERS

SPA Series	12
------------------	----

AMPLIFIERS WITH DSP

ISP Series	18
HSP Series	19

BOOSTER AMPLIFIERS

AMC+ P Series	21
DCM 500	21
HSP Series	19

DISTRIBUTION AMPLIFIER

AMIS 26	15
---------------	----

EQUALIZERS

SSP Series	23
------------------	----

HIGH POWER SPEAKERS

SLX Series	13
SPA Series	12

IN-CEILING SPEAKERS

SIC 1000	8
SIC 2000	9
SIC 3000	9

LINE ARRAY SPEAKERS

A-Lign	5
CLA	11

LINE MIXERS

MX Series	15
-----------------	----

MIXER AMPLIFIERS

AMC+ Series	21
HS Series	20

ON WALL SPEAKERS

A-Lign	5
CA Series	5
CS Series	5
Genie Project Pack	6
SOW Series	6

OUTDOOR SPEAKERS

MH 40	7
RS 650	7
SGS 101	7
XRXODV	7

POWER AMPLIFIERS

AV Series	23
ISP Series	18
SLA Series	22

SMALL FORMAT ANALOGUE MIXERS

SMX Series	14
------------------	----

SUBWOOFERS

SSW Series	10
------------------	----

VOLUME CONTROLS

DeVC 1005/ 1015	24
WMA 25/50/100 CW	24

WIRELESS MICROPHONES

SVM Series	10
------------------	----

ZONING SOLUTIONS

Digipage	16
Digipage Jr	16
Zone Mix 3	17
ZRM 4	17
Zoner 16	17



“*Sonodyne conveys sound
in its purest form*”

~ Ustad Zakir Hussain
Brand ambassador



At Sonodyne, sound matters. For the last five decades, we have focussed on R & D, and manufacturing of residential and professional audio products. With two design centers, and three manufacturing locations, in Mumbai and Kolkata, Sonodyne, today, is a well-recognized brand in professional audio, globally.

Our core development efforts have resulted in innovations in waveguide, transducer, enclosure and electronics designs. We have facilities for IP (immersion proof) testing and also EASE data generation. We understand the attention-to-detail, performance, and reliability required for delivering a high quality installation. We are equipped and committed to providing timely and efficient technical support to our systems integrator partners.

In the following pages, we present our newest range of solutions for Installed Sound. This extensive offering reflects Sonodyne's core beliefs of high performance and value. With the products meeting global performance and safety standards, we are confident to meet the sound needs for a variety of venues and installed sound applications.



future group
india tomorrow



pantaloons

HomeTown
Ab ghar banana kitna aasaan!

ezone
EXPERIENCE ELECTRONICS

BIG BAZAAR
NAVE INDIA KA BAZAAR



mothercare



Reliance
RETAIL

Hamleys

TRENDS

Reliance digital

lemon tree
HOTELS



MARKS &
SPENCER



SPECIALITY
RESTAURANTS LTD.

Manyavar

Clarks



H&M



TANISHQ

AJ | ARMANI
JEANS

LANDMARK
GROUP



lifestyle
YOUR STYLE. YOUR STORE.

ICONIC



The Oberoi
MUMBAI, INDIA



ROYAL
ENFIELD



DUNKIN'
DONUTS



fabindia
CELEBRATE INDIA



the
PARK
hotels

SHOPPERS STOP
START SOMETHING NEW

max
LOOK GOOD. FEEL GOOD.

CHAI POINT

accenture



raymond

TITAN

GANT

VAN HEUSEN
POWER DRESSING

LOUIS PHILIPPE

NAUTICA

WESTSIDE

Dune
LONDON

Levi's

GAS

SENCO
GOLD & DIAMONDS



COLUMN SPEAKERS



CA SERIES

- 2 models
- 2 way design
- Aluminium cabinet
- Direct and LMT connectivity
- Wall mount provision
- Black/ white colour
- IP 66 rated version available



CS SERIES

- 2 models
- 2 way column speakers
- Aluminium extruded enclosure
- Sturdy swivel bracket
- Both direct and LMT connectivity

A-LIGN 400S

- Monopole line array including 16 drivers
- Wide horizontal coverage
- 2 way design
- Aluminium cabinet
- Wall mount provision
- Black/ white colour



DESCRIPTION	2 way monopole line array
ENCLOSURE	5mm extruded aluminium with PU paint
GRILL	Perforated nylon
TRANSDUCER COMPLEMENTS	8 x 3" pp cone woofer 8 x dome tweeter with wave guide
INPUT	Twist lock
PARALLEL LINK	Euroblock
SENSITIVITY (1W/1M) half space	94dB
MAXIMUM SPL	121dB
NOMINAL IMPEDANCE	4Ω
CROSSOVER FREQUENCY	1.8kHz
FREQUENCY RESPONSE (-3dB)	180Hz ~ 20kHz
FREQUENCY RANGE (-10dB)	140Hz ~ 25kHz
COVERAGE PATTERN	110° H x 20° V
CONTINUOUS POWER HANDLING	200W
RECOMMENDED AMP POWER	300W
DIMENSIONS (HxWxD)mm	1194 x 125 x 110
NET WEIGHT	9.8kg
MOUNTING OPTIONS	A400 PM, A400 WB

Recommended amplification by Australian Monitor

	CA 410	CA 820	CS 210	CS 220
DESCRIPTION	2 way column speaker	2 way column speaker	2 way column speaker	2 way column speaker
ENCLOSURE	3mm extruded aluminium	3mm extruded aluminium	3mm extruded aluminium	3mm extruded aluminium
GRILL	Perforated nylon	Perforated nylon	Perforated metal	Perforated metal
TRANSDUCER COMPLEMENTS	4 x 3" pp woofer 1 x 1" dome tweeter	8 x 3" pp woofer 1 x 1" dome tweeter	4 x 2" woofer 1 x 1" dome tweeter	8 x 2" woofer 1 x 1" dome tweeter
INPUT	Euroblock	Euroblock	Euroblock	Euroblock
SENSITIVITY (1W/ 1M) half space	93dB	95dB	98dB	91dB
NOMINAL IMPEDANCE(direct mode)	8Ω	4Ω	8Ω	4Ω
CROSSOVER FREQUENCY	2.6kHz	1.8kHz	6kHz	6kHz
FREQ. RESPONSE (-3dB) (Direct Mode)	150Hz ~ 15kHz	140Hz ~ 18kHz	180Hz ~ 18kHz	180Hz ~ 18kHz
FREQ. RANGE (-10dB) (Direct Mode)	120Hz ~ 20kHz	110Hz ~ 20kHz	160Hz ~ 20kHz	160Hz ~ 20kHz
PROGRAM POWER (Direct Mode)	80W	150W	60W	120W
POWER TAPS @ 70V	1.25, 2.5, 5, 10W	3.75, 7.5, 15, 30W	1.25, 2.5, 5, 10W	1.9, 3.75, 7.5, 15W
POWER TAPS @ 100V	2.5, 5, 10, 20W	7.5, 15, 30, 60W	2.5, 5, 10, 20W	3.8, 7.5, 15, 30W
DIMENSIONS (HxWxD) mm	579 x 125 x 110	878 x 125 x 110	430 x 85 x 85	660 x 85 x 85
NET WEIGHT	4kg	6kg	2.5kg	4kg
MOUNTING OPTIONS	Swivel bracket (included)	Wall mount (optional)	Swivel bracket (included)	Swivel bracket (included)
COLOUR	White/ black	White/ black	White/ black	White/ black
WALL MOUNT	A400 WB	A400 WB	Included	Included

WALL-MOUNT SPEAKERS



SOW SERIES

- 3 models
- 2 way design
- ABS moulded enclosure
- Direct and LMT connectivity
- Wall mount

	SOW 5140	SOW 5150	SOW 5160	SVX 101
DESCRIPTION	Wall-mounting speaker	Wall-mounting speaker	Wall-mounting speaker	Wall-mounting speaker
TRANSDUCERS	1 x 4" woofer, 1 x 0.5" tweeter	1 x 5" woofer, 1 x 0.5" tweeter	1 x 6" woofer, 1 x 1" tweeter	1 x 4" woofer, 1 x 0.5" tweeter
FREQUENCY RANGE (-10dB)	110Hz ~ 18kHz	85Hz ~ 18kHz	55Hz ~ 20kHz	90Hz ~ 20kHz
FREQUENCY RESPONSE (-3dB)	130Hz ~ 18kHz	110Hz ~ 18kHz	80Hz ~ 20kHz	110Hz ~ 20kHz
SENSITIVITY 1W/ 1M half space	88dB	89dB	90dB	88dB
SPL AT RATED POWER	100dB @ 20W	103dB @ 30W	107 dB @ 60W	94dB @ 5W
NOMINAL IMPEDANCE	8Ω	8Ω	8Ω	NA
POWER HANDLING DIRECT MODE	40W	50W	60W	20W
POWER TAPS, 70V	1.25, 2.5, 5, 10W	1.9, 3.75, 7.5, 15W	3.75, 7.5, 15, 30W	2.5W
POWER TAPS, 100V	2.5, 5, 10, 20W	3.8, 7.5, 15, 30W	7.5, 15, 30, 60W	5W
DIMENSION (H x W x D) mm	240 x 152 x 170	265 x 177 x 178	308 x 202 x 202	188 x 135 x 123
COLOUR	White/ Black	White/ Black	White/ Black	White/ Black
MOUNTS	Wall mount by U-type bracket	Wall mount by U-type bracket	Wall mount by U-type bracket	Wall mount by L-type bracket

GENIE PROJECT PACK



- 4.1 true stereo system
- Recommended amplifier:
IA 6410: 4 x 60W + 1 x 80W (sub)
- Wall mount
- Includes 4 x Genie 1, 1 x Sub 28
- Add more inputs, control with SC 2311
- White/ black colour

	GENIE 1	SUB 28P
DESCRIPTION	2 way satellite speaker	Bandpass subwoofer
ENCLOSURE	Die cast aluminum	FRP (industrial fibre glass)
GRILL	Steel	NA
TRANSDUCER COMPLEMENTS	1x3" coated cone woofer, 1x0.5" dome tweeter	2 x 6" high excursion subwoofer
INPUT	Gold plated binding posts	Binding posts
SENSITIVITY (1W/1M) half space	87dB	88dB
NOMINAL IMPEDANCE	8Ω	16Ω
CROSSOVER FREQUENCY	5.5kHz	NA
FREQUENCY RESPONSE (-3dB)	120Hz ~ 20kHz	45Hz ~ 150Hz
FREQUENCY RANGE (-10dB)	90Hz ~ 22kHz	35Hz ~ 150Hz
PROGRAM POWER (direct mode)	60W	100W
DIMENSIONS (HxWxD) mm	148 x 88 x 110	360 x 510 x 233
NET WEIGHT	1.35kg	10kg
MOUNTING OPTIONS	Swivel bracket (included)	Wall mount (included)
COLOUR	Black/ white	Black/ white
IN THE BOX	1 x Genie 1 + wall bracket	1 x Sub 28P+ wall bracket



	SC 2311
DESCRIPTION	Professional stereo mixer preamplifier
INPUTS	3 x MIC fully balanced, 1 stereo line level input, 2 unbalanced stereo line level inputs
OUTPUTS	1 unbalanced line level stereo RCA output, 1 balanced line level stereo TRS output
FREQUENCY RESPONSE (±3dB)	10Hz ~ 20kHz
S/N RE (MIC/LINE) 5V OUTPUT	Better than 85dB
CHANNEL SEPARATION (1kHz)	55dB
THD	0.02% @ 1kHz
DIMENSIONS (HxWxD) mm	483 x 44 x 168
NET WEIGHT	2.3kg

OUTDOOR SPEAKERS



MH 40

- High quality music horn
- Ideal for speech and music outdoors
- Moulded FRP enclosure
- Wide directivity
- IP 65 rating

RS 650

- Landscape (rock) speaker
- 2 way transducer
- Moulded FRP enclosure
- IP 65 rating

SGS 101

- Landscape (mushroom) speaker
- 2 way transducer
- Moulded FRP enclosure
- IP 65 rating

	MH 40	RS 650	SGS 101
DESCRIPTION	Horn-loaded weatherproof speaker	Landscape (rock) speaker	Landscape (mushroom) speaker
TRANSDUCERS	1 x 5" full range	1 x 6" coaxial speaker	1 x 6" coaxial speaker
ENCLOSURE	FRP (industrial fibre glass) with steel grille	FRP (industrial fibre glass)	FRP (industrial fibre glass)
FREQUENCY RANGE (-10dB)	180Hz ~ 8kHz (direct mode)	80Hz ~ 18.5kHz	80Hz ~ 18.5kHz
FREQUENCY RESPONSE (-3dB) (direct mode)	250Hz ~ 6kHz	120Hz ~ 16kHz	12 Hz ~ 16kHz
SENSITIVITY (1W/1M) half space	101dB	88dB	88dB
SPL AT RATED POWER	114dB @ 30W	102dB @ 30W	102dB @ 30W
NOMINAL IMPEDANCE (direct mode)	8Ω	8Ω	8Ω
POWER HANDLING - DIRECT	30W	30W	30W
POWER TAPS @ 70V	1.9, 3.75, 7.5, 15W		
POWER TAPS @ 100V	3.8, 7.5, 15, 30W	15, 25W	10, 20W
IP RATING	IP 65	IP 65	IP65
DIMENSIONS (H x W x D) mm	225 x 276 x 295	280 x 450 x 280	332 x 324 x 324
GROSS WEIGHT	6.0kg	6.5kg	6.5kg

XRSODV SERIES

The XRS outdoor/voltage speaker range bring the legendary XRS sonic performance to the weather proof and constant voltage speaker market.



XRS8ODV

The XRS8ODV features an IP44 rating for out door use as well as a multi tap constant voltage transformer (taps at 100W, 50W and 25W) for use in larger articulated constant voltage systems such as sporting arenas.

XRS10ODV

The XRS10ODV features an IP44 rating for out door use as well as a multi tap constant voltage transformer for use in larger articulated constant voltage systems such as sporting arenas.

XRS 12ODV

The XRS12ODV features an IP44 rating for out door use as well as a multi tap constant voltage transformer for use in larger articulated constant voltage systems such as sporting arenas.

	XRS 8 ODV	XRS 10 ODV	XRS 12 ODV
POWER HANDLING	100W	250W	300W
FREQUENCY RESPONSE	65Hz ~ 18kHz	55Hz ~ 18kHz	50Hz ~ 1 kHz
COMPRESSION DRIVER DISPERSION	90° x 90°	90° x 90°	90° x 90°
DIMENSIONS (H x W x D) mm	400 x 277 x 257	470 x 321 x 325	620 x 415 x 382

IN-CEILING SPEAKERS



SIC 1000, 1100 SERIES

- 3 models
- 1000 Series uses full range transducer
- 1100 used 2 way transducer
- Twist lock fixing

SIC 1200 SERIES

- 3 models
- 2 way dual concentric transducers
- Both LMT, direct modes
- High sonic performance for music
- Twist lock fixing

	SIC 1040	SIC 1060	SIC 1160
DESCRIPTION	Full range in ceiling speaker	Full range in ceiling speaker	2 way in ceiling speaker
TRANSDUCERS	1 x 4" dual cone woofer	1 x 6" dual cone woofer	1 x 6" coaxial speaker
FREQUENCY RANGE (-10dB)	120Hz ~ 16kHz	90Hz ~ 16kHz	60Hz ~ 22kHz
FREQUENCY RESPONSE (-3dB)	150Hz ~ 14kHz	120Hz ~ 14kHz	70Hz ~ 20kHz
SENSITIVITY 1W/1M half space	88dB	89dB	88dB
SPL AT RATED POWER	95dB @ 5W	96dB @ 5W	98dB @ 10W
NOMINAL IMPEDANCE	8Ω	8Ω	8Ω
POWER HANDLING DIRECT MODE	10W	10W	20W
POWER TAPS, 70V	0.3, 0.65, 1.25, 2.5W	0.63, 1.25, 2.5W	1.25, 2.5, 5W
POWER TAPS, 100V	0.6, 1.3, 2.5, 5W	1.25, 2.5, 5W	2.5, 5, 10W
OUTER DIMENSION (depth x dia) mm	142 x 171	75 x 228	82 x 228
CUT OUT DIMENSION mm	141	196	196
COLOUR	White	White	White
MOUNTS	Ceiling mount	Ceiling mount	Ceiling mount
GROSS WEIGHT	0.6kg	1.5kg	1.9kg

	SIC 1240	SIC 1260	SIC 1280
DESCRIPTION	2 way in ceiling speaker	2 way in ceiling speaker	2 way in ceiling speaker
TRANSDUCERS	1 x 4" coaxial speaker	1 x 6" coaxial speaker	1 x 8" coaxial speaker
FREQUENCY RANGE (-10dB)	90Hz ~ 20kHz	70Hz ~ 20kHz	60Hz ~ 22kHz
FREQUENCY RESPONSE (-3dB)	110Hz ~ 18kHz	85Hz ~ 18kHz	75Hz ~ 20kHz
SENSITIVITY 1W/1M half space	87dB	88dB	90dB
SPL AT RATED POWER	99dB @ 20W	100dB @ 20W	104dB @ 30W
NOMINAL IMPEDANCE	8Ω	8Ω	8Ω
POWER HANDLING DIRECT MODE	30W	60W	60W
POWER TAPS, 70V	1.25, 2.5, 5, 10W	1.25, 2.5, 5, 10W	1.25, 2.5, 5, 10W
POWER TAPS, 100V	2.5, 5, 10, 20W	2.5, 5, 10, 20W	2.5, 5, 10, 20W
OUTER DIMENSION (depth x dia) mm	143 x 171	110 x 237	95 x 280
CUT OUT DIMENSION mm	141	203	248
COLOUR	White	White	White
MOUNTS	Ceiling mount	Ceiling mount	Ceiling mount
GROSS WEIGHT	1kg	2.2kg	2.8kg

IN-CEILING SPEAKERS



SIC 2000 SERIES

- 3 models
- 2 way dual concentric transducers
- Tuned rear enclosures (back can), ABS moulded
- Both LMT, direct modes
- High sonic performance for music
- Twist lock fixing

	SIC 2240	SIC 2260	SIC 2280
DESCRIPTION	2 way in ceiling speaker with back can	2 way in ceiling speaker with back can	2 way in ceiling speaker with back can
TRANSDUCERS	1 x 4" coaxial speaker	1 x 6" coaxial speaker	1 x 8" coaxial speaker
FREQUENCY RANGE (-10dB)	80Hz ~ 22kHz	60Hz ~ 22kHz	50Hz ~ 22kHz
FREQUENCY RESPONSE (-3dB)	90Hz ~ 20kHz	70Hz ~ 20kHz	60Hz ~ 20kHz
SENSITIVITY 1W/1M half space	87dB	88dB	90dB
SPL AT RATED POWER	99dB @ 20W	102dB @ 30W	104dB @ 30W
NOMINAL IMPEDANCE	8Ω	8Ω	8Ω
POWER HANDLING DIRECT MODE	30W	60W	60W
POWER TAPS, 7 V	1.25, 2.5, 5, 10W	1.9, 3.75, 7.5, 15W	1.9, 3.75, 7.5, 15W
POWER TAPS, 100V	2.5, 5, 10, 20W	3.8, 7.5, 15, 30W	3.8, 7.5, 15, 30W
OUTER DIMENSION (depth x dia) mm	157 x 205	184 x 260	205 x 300
CUT OUT DIMENSION mm	179	234	274
COLOUR	White	White	White
MOUNTS	Ceiling mount	Ceiling mount	Ceiling mount
GROSS WEIGHT	1.8kg	2.8kg	3.5kg



SIC 3000 SERIES

- 2 models
- 2 way dual concentric transducers
- High resolution crossover
- Rimless magnetic grill
- Both LMT, direct modes
- High sonic performance for music
- Twist lock fixing

	SIC 3260	SIC 3280
DESCRIPTION	2 way in-ceiling speaker with magnetic grill	2 way in-ceiling speaker with magnetic grill
TRANSDUCERS	1 x 6" coaxial speaker	1 x 8" coaxial speaker
FREQUENCY RANGE (-10dB)	60Hz ~ 21kHz	45Hz ~ 21kHz
FREQUENCY RESPONSE (-3dB)	70Hz ~ 20kHz	55Hz ~ 20kHz
SENSITIVITY 1W/1M half space	91dB	92dB
SPL AT RATED POWER	105dB @ 30W	106dB @ 30W
NOMINAL IMPEDANCE	8Ω	8Ω
POWER HANDLING	60W	60W
POWER TAPS, 70V	1.9, 3.75, 7.5, 15W	1.9, 3.75, 7.5, 15W
POWER TAPS, 100V	3.8, 7.5, 15, 30W	3.8, 7.5, 15, 30W
OUTER DIMENSION (depth x dia) mm	120 x 241	142 x 280
CUT OUT DIMENSION mm	207	245
COLOUR	White	White
MOUNTS	Ceiling mount	Ceiling mount
GROSS WEIGHT	2.5kg	3.3kg

MICROPHONES/ SUBWOOFERS



SVM SERIES

- UHF wireless microphone with dual channels
- 2 versions: DH1: dual handheld or LH1 (1 handheld, 1 lapel)
- Frequency 865~867MHz

RECEIVER	
CARRIER WAVE FREQ. RANGE	865 ~ 867MHz
CARRIER WAVE STABILITY	10ppm
SENSITIVITY	-105dB @ sinad=12dB
SIGNAL TO NOISE RATIO	> 105dB
T.H.D.	<0.5% @ 1kHz
IMAGE REJECTION	85dB typical
SPURIOUS REJECTION	75dB typical
FREQUENCY RESPONSE	40Hz ~ 18kHz
WORKING DISTANCE	> 200 ft
AF OUTPUT IMPEDANCE	2.2 k Ω

MAX OUTPUT LEVEL	Balanced : 0~400mV, Unbalanced : 0~200mV
DISPLAY	LCD
POWER SUPPLY	External DC Power supply, 1A, 12V DC
OUTPUT CONNECTOR	XLR balanced socket, unbalanced TRS 6.35mm socket
TRANSMITTER	
TRANSMITTER POWER	30mW
SPURIOUS EMISSION	<40dB with carrier
DISPLAY	LCD
BATTERY	1.5V x 2 pcs
BATTERY LIFE	6-8 hours

SSW SERIES

- 3 models
- Wall, floor and ceiling mount versions
- Inbuilt crossover for high pass to satellite speakers
- Both stereo and mono modes
- Both direct and LMT modes (except SSW 1030)



SSW 1010: On wall

SSW 1020: In ceiling

SSW 1030: On wall/ on floor

TRANSDUCERS	1 x 6" dual coil subwoofer	1 x 6" dual coil subwoofer	1 x 10" dual coil subwoofer
FREQUENCY RANGE (-10dB)	40Hz ~ 180Hz	50Hz ~ 150Hz	40Hz ~ 180Hz
FREQUENCY RESPONSE (-3dB)	45Hz ~ 180Hz	55Hz ~ 150Hz	45Hz ~ 180Hz
SENSITIVITY 1W/1M	88dB (half space)	90dB (half space)	95dB
SPL AT RATED POWER	105dB @ 60W	107dB @ 60W	119dB @ 300W
NOMINAL IMPEDANCE, direct	4 Ω + 4 Ω	4 Ω + 4 Ω	4 Ω + 4 Ω
POWER HANDLING (direct, stereo)	100W + 100W	100W + 100W	300W + 300W
POWER TAPS, 100V (mono)	7.5, 15, 30, 60W	7.5, 15, 30, 60W	NA
DIMENSION (H x W x D) mm	350 x 450 x 180	205 x 300 (Depth x Diameter)	325 x 580 x 335
COLOUR	White/ Black	White/ Black	White/ Black
MOUNTS	On wall mount by bracket	Ceiling mount kit	U-type bracket for wall mount
GROSS WEIGHT	10kg	4.5kg	16.5kg

COMPACT LINEARRAY



Introducing the CLA (Compact Line Array) from Sonodyne Professional. The CLA addresses key issues faced in medium size venues:

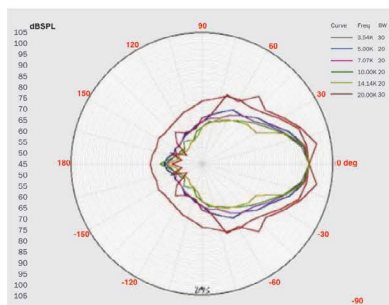
TRUE LINE ARRAY: The CLA comprises a 1" compression driver coupled to a planar wave driver flanked by two 7" mid-bass cum upper-mid drivers on either side, mounted in an FRP (fiberglass reinforced plastic) enclosure. The compression driver uses a Neodymium magnet and combines high SPL with high bandwidth extending to 22kHz. This is coupled to a rectangular waveguide which converts the spherical wavefront emitted by the compression driver into a planar wavefront. The conversion works on the principle of internal diffraction by creating paths of varying lengths carved into the waveguide. The throat of the waveguide terminates into a 4" x 1" slot and is flared into a conical mouth to provide 100° horizontal dispersion. Precise vertical pattern control is maintained by the waveguide over the entire frequency range

EASY TO RIG: Upto 8 cabinets, flown from a proprietary truss head, may be safely flown within 0° ~ 11° easily adjustable splay angles. Upto 2 cabinets may be pole mounted atop a subwoofer

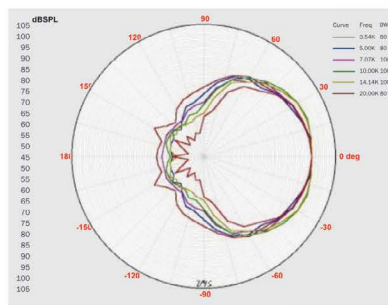
COMPACT & LIGHTWEIGHT: The CLA enclosure is FRP (fiberglass reinforced plastic) and (including all flying hardware) the CLA weighs less than 17kg

POWERFUL: Each cabinet handles 600W effortlessly, and the maximum SPL / array of 8 is greater than 140dB (@ rated power)

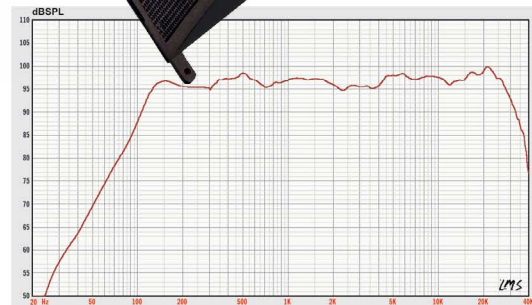
VERTICAL POLAR RES.: SINGLE UNIT



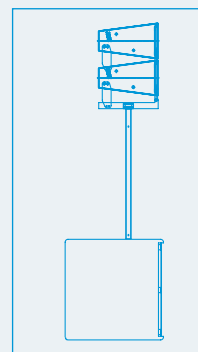
HORIZONTAL POLAR RES.: SINGLE UNIT



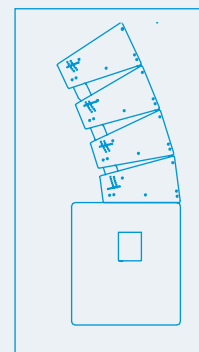
SPL VS FREQUENCY: SINGLE UNIT



DESCRIPTION	Compact 2 way line array
ENCLOSURE	FRP (fibre reinforced plastic) with stipple PU finish
GRILLE	2mm perforates MS with acoustic foam
TRANSDUCER COMPLEMENTS	LF: 2 x 175mm Neodymium magnet, die-cast frame HF: 1 x 25mm Neodymium magnet, Titanium dome compression driver
SENSITIVITY (1W/1M) HALF SPACE	99dB
MAXIMUM SPL	130dB
NOMINAL IMPEDANCE	16Ω
CROSSOVER FREQUENCY	2.2kHz
FREQUENCY RESPONSE	110Hz ~ 20kHz
FREQUENCY RANGE	90Hz ~ 22kHz
COVERAGE PATTERN	100° H x 12° V
CONTINUOUS POWER HANDLING	400W
RECOMMENDED AMPLIFIER POWER	600W
DIMENSIONS (HxWxD) mm	255 x 588 x 423
NET WEIGHT	17kg
MOUNTING OPTIONS	CLA HW1: Flying truss head, ground stack CLA PM1: Pole mount



UPTO 2 UNITS MAYBE POLE MOUNTED



CAN BE STACKED ATOP A SUBWOOFER
GROUND

HIGH POWER SPEAKERS



SPA SERIES

The SPA is our newest range of PA speakers. It comprises 8 unique models that are ideal not only for installation but also for live performances. All models are two way designs employing high performance transducers. The ABS moulded enclosure is rigid, portable, and allows for ease of installation. The sound quality is excellent allowing the speakers to be also used as stage monitors. Well priced, reliable, and great sounding, the SPA is a great new solution for professional applications where sound quality matters.

- Active and Passive versions
- Rugged portable cabinets
- Pole mount
- High efficiency wide band D Class amplifiers, bi-amplified
- Wall mount
- 2 inputs: mic and line
- Custom transducers
- Floor monitor
- 2 band EQ

	SPA 108	SPA 110	SPA 112	SPA 115
TRANSDUCERS	LF: 8" with 1.5" VC, HF: 1" HLCD with 1.1" VC	LF: 10" with 2" VC, HF: 1" HLCD with 1.1" VC	LF: 12" with 2.5" VC, HF: 1" HLCD with 1.1" VC	LF: 15" with 3" VC, HF: 1" HLCD with 1.75" VC
CROSSOVER FREQUENCY	2.2kHz	2kHz	1.8kHz	1.8kHz
FREQUENCY RANGE (-10dB)	65Hz ~ 19kHz	60Hz ~ 19kHz	60Hz ~ 19 kHz	50Hz ~ 19kHz
FREQUENCY RESPONSE (-3dB)	75Hz ~ 17kHz	65Hz ~ 17kHz	65Hz ~ 17 kHz	60Hz ~ 17kHz
DIRECTIVITY (HF H x V)	90° x 50°	90° x 50°	90° x 50°	90° x 50°
SENSITIVITY 1W/1M	90dB	92dB	96dB	98dB
POWER HANDLING CONTINUOUS AES	100W	150W	250W	300W
POWER HANDLING PROGRAM	200W	300W	500W	600W
CABINET	Plastic	Plastic	Plastic	Plastic
MOUNTING	Wall bracket, pole mount, floor monitor	Wall bracket, pole mount, floor monitor	Pole mount, floor monitor	Pole mount, floor monitor
DIMENSIONS (H x W x D) mm	400 x 260 x 227	510 x 330 x 220	580 x 390 x 320	685 x 470 x 385
NET WEIGHT	7.6kg	10.7kg	15.6kg	20.0kg

	SPA 108P	SPA 110P	SPA 112P	SPA 115P
TRANSDUCERS	LF: 8" with 1.5" VC, HF: 1" HLCD with 1.1" VC	LF: 10" with 2" VC, HF: 1" HLCD with 1.1" VC	LF: 12" with 2.5" VC, HF: 1" HLCD with 1.1" VC	LF: 15" with 3" VC, HF: 1" HLCD with 1.75" VC
CROSSOVER FREQUENCY	2.2kHz	2kHz	1.8kHz	1.8kHz
FREQUENCY RANGE (-10dB)	60Hz ~ 19kHz	55Hz ~ 19kHz	55Hz ~ 19kHz	47Hz ~ 19kHz
FREQUENCY RESPONSE (-3dB)	70Hz ~ 17kHz	60Hz ~ 17kHz	60Hz ~ 17kHz	55Hz ~ 17kHz
DIRECTIVITY (HF H x V)	90° x 50°	90° x 50°	90° x 50°	90° x 50°
MAX SPL	112dB	118dB	124dB	128dB
AMPLIFIER POWER RMS	100W (LF 70W, HF 30W)	150W (LF: 100W, HF: 50W)	250W (LF: 200W, HF: 50W)	350W (275W + 75W)
AMPLIFIER POWER PROGRAM	200W	300W	500W	700W
INPUTS	Balanced mic: 1; Balanced line: 1; Balanced Mix Out: 1		Balanced mic: 1; Balanced line: 1; Balanced Mix Out: 1	
CONTROLS	Level controls: Line, Mic, Master, Bass, Treble		Level controls: Line, Mic, Master, Bass, Treble	
USB SD CARD	Support WMA, WAV, mp3 files; Controls: Play / Pause, Stop, Repeat, Next , Previous			
BT	Version 4.2	Version 4.2	Version 4.2	Version 4.2
MOUNTING	Wall bracket, pole mount, floor monitor		Pole mount, floor monitor	
CABINET	Plastic	Plastic	Plastic	Plastic
DIMENSIONS (H x W x D) mm	400 x 260 x 227	510 x 330 x 220	580 x 390 x 320	685 x 470 x 385
NET WEIGHT	9.3kg	12.0kg	16.9kg	21.3kg

HIGH POWER SPEAKERS



SLX SERIES

The SLX Series is a range of engineered professional loudspeakers for high fidelity and SPL in both indoor and outdoor applications. The range comprises full range speakers and subwoofers. Select models can be used as wedges for stage monitoring and flown for installation applications. The transducers are customised to meet the frequency, SPL, and high power handling needs. The HF waveguides have been designed to ensure a smooth, predictable coverage. The enclosure is made from plywood and finished in multiple coats of durable stipple paint. The powder coated perforated grill is mechanically locked into the cabinet for not only optimal transducer protection but also to minimise any vibration. Roadworthy and great sounding the SLX range meets the sound needs for live and recorded performances.

- Portable and fixed install PA speakers
- Constant directivity HF with custom waveguide
- High excursion LF transducer
- High power handling and SPL
- Rigid painted cabinet with heavy internal bracing
- Flying points

	SLX 1008	SLX 1010	SLX 1120	SLX 1150	SLX 1152	SLX 2180	SLX 2182
DESCRIPTION	Passive 2 way, 8", bass-reflex	Passive 2 way, 10", bass-reflex	Passive 2 way, 12", bass-reflex	Passive 2 way, 15", bass-reflex	Passive 2 way, dual 15", bass-reflex	Passive, 18" Subwoofer	Passive, dual 18" Subwoofer
LF TRANSDUCER							
SIZE	8"	10"	12"	15"	2 x 15"	18"	2 x 18"
VOICE COIL	1.5"	2"	2.5"	3"	3"	5"	5"
HF TRANSDUCER							
SIZE	1"	1"	1"	1"	2"	NA	NA
VOICE COIL	1.1"	1.1"	1.75"	2"	3"	NA	NA
NOMINAL IMPEDANCE	8Ω	8Ω	8Ω	8Ω	4Ω	8Ω	4Ω
FREQ. RANGE (-10dB)	60Hz ~ 22kHz	50Hz ~ 22kHz	45Hz ~ 22kHz	40Hz ~ 22kHz	35Hz ~ 19kHz	30Hz ~ 150Hz	30Hz ~ Crossover freq
FREQ. RESPONSE(-3dB)	70Hz ~ 20kHz	60Hz ~ 20kHz	55Hz ~ 20kHz	50Hz ~ 20kHz	47Hz ~ 17kHz	40Hz ~ 170Hz	40Hz ~ Crossover freq
CROSSOVER FREQ	2.9kHz	1.2kHz	3.2kHz	2.5kHz	1.5kHz	Recommended: 80 ~ 120Hz, 18 ~ 24dB/ oct low-pass	
RECOMMENDED SUBSONIC FILTER	60Hz, 24dB/octave	55Hz, 24dB/octave	50Hz, 24dB/octave	45Hz, 24dB/octave	40Hz, 24dB/octave	35Hz, 24dB/octave	35Hz, 24dB/octave
HF DIRECTIVITY	90° x 50°	90° x 50°	90° x 50°	90° x 50°	90° x 50°	NA	NA
SENSITIVITY (1W 1M)	92dB	94dB	95dB	96dB	99dB	97dB	100dB
MAX SPL							
CONTINUOUS	112dB	117dB	121dB	124dB	130dB	128dB	134dB
PEAK	118dB	123dB	127dB	130dB	136dB	134dB	140dB
POWER HANDLING							
CONTINUOUS	100W	200W	400W	600W	1200W	1300W	2600W
PROGRAM	200W	400W	800W	1200W	2400W	2600W	5200W
CONNECTORS	1 x Twist-lock connector (input) 1 x Twist-lock connector (link)						
MOUNTING	35.5mm pole, 18 x M10 suspension points	35.5mm pole, 18 x M10 suspension points	35.5mm pole, 18 x M10 suspension points	35.5mm pole, 17 x M10 suspension points	12 x M10 suspension points	NA	NA
FINISH	Durable Paint						
ENCLOSURE SHAPE	Wedge, with one 45° face	Wedge, with one 45° face	Wedge, with one 45° face	Wedge, with one 45° face	Trapezoidal	Rectangular	Rectangular
ENCLOSURE MATERIAL	15mm Plywood	15mm Plywood	15, 18mm Plywood	15, 18mm Plywood	18mm Plywood	18mm Plywood	18mm Plywood
GRILLE	Powder coated 18 gauge perforated steel						
DIMENSIONS HxWxD mm	445 x 270 x 290	517 x 320 x 350	610 x 360 x 380	685 x 435 x 458	1192 x 546 x 517	700 x 565 x 690	574 x 1205 x 681
WEIGHT	11.7Kg	14.5Kg	17.3Kg	23Kg	56Kg	51Kg	92Kg

SMALL FORMAT ANALOGUE MIXERS



SMX SERIES

The SMX Series of mixers are compact live sound mixing consoles. Focus is on providing the engineer with a variety of features like additional mic inputs, multiple aux, global and local EQs, and subgroups. Input connectivity on BT and USB are available with record output to onboard USB. In a slim, compact form-factor, the SMX is an excellent console for small events where sound quality is paramount.

- High-Performance small format analogue mixers with onboard effects
- Mic preamps with low noise performance
- EQ with sweep-able mid-bands per channel
- Tap Delay on select models
- BT to connect tab or phone
- USB rec and playback
- 32bit 42kHz Effects Engine featuring Reverb, Delay, Chorus and Modulation
- Trim Limiters on input channels
- Combo inputs for guitars, basses and other instruments
- Hi-Pass Filters (low-cut) and 48V Phantom Power on all mic channels (12 and 16 channel)
- Smooth premium-quality faders
- Robust polymer lightweight construction for tour-grade build quality and reliability
- Internal universal power supply
- DC 5V lamp connector
- +48V phantom power
- XLR balanced outputs

	SMX 1008	SMX 1112	SMX 1116	SMX 1124
INPUT: MONO (MIC / LINE)	6	8	12	20
STEREO	1	2	2	2
OUTPUT: MAIN	2	2	2	2
AUX	-	4	4	4
GROUP	-	2	2	2
GRAPHIC EQ	7 band stereo	9 band stereo, switchable	9 band stereo, switchable	9 band stereo, switchable
EQ HIGH		Gain: +15dB/ -15dB, Frequency: 12kHz shelving		
EQ MID	Gain: +15dB/-15dB, Frequency: 2.5kHz peaking.	Gain: +15dB/ -15dB, Frequency: Mono 100Hz~ 3kHz peaking. Stereo 3kHz peaking	Gain: +15dB/ -15dB, Frequency: Mono 100Hz~ 3kHz peaking. Stereo 3kHz peaking	Gain: +15dB/ -15dB, Frequency: Mono 100Hz~ 3kHz peaking. Stereo 3kHz peaking
EQ LOW		Gain: +15dB/ -15dB, Frequency: 80Hz shelving		
LOW CUT	NA	75Hz 18dB/octave	75Hz 18dB/octave	75Hz 18dB/octave
EFFECTS	99 effects, DSP based	99 effects, DSP based	99 effects, DSP based	99 effects, DSP based
TAP DELAY	no	yes	yes	yes
BT PLAYBACK	yes	yes	yes	yes
USB PLAYBACK	yes	yes	yes	yes
RECORD TO USB	yes	yes	yes	yes
FADERS	60mm	100mm	100mm	100mm
PHANTOM POWER	Global	Per mic channel/ global	Per mic channel/ global	Per mic channel/ global
OTHER FEATURES PER CHANNEL	Mute switch for each channel	Mute, solo, low-cut and bus- assign switches (Main, Sub)	Mute, solo, low-cut and bus- assign switches (Main, Sub)	Mute, solo, low-cut and bus- assign switches (Main, Sub)
MIC EIN, 50 Ω SOURCE RES		-133dB		
FREQ. RESPONSE + 0, -1dB		10Hz ~ 90kHz		
THD		0.004% A- weighted		
SIGNAL TO NOISE RATIO		110dB, A- weighted		
MAX OUTPUT LEVEL		+22dBu		
POWER REQUIREMENT		230V AC 50Hz		
POWER CONSUMPTION	30W	50W	55W	60W
DIMENSION H X W X D MM	120 x 360 x 360	150 x 510 x 475	150 x 620 x 475	150 x 840 x 475

LINE MIXERS DISTRIBUTION AMPLIFIER



MX 61 6 channel mono mixer

- 6 input mono 1RU mixer
- Input 1 is switchable to be pre/post master
- Dual colour signal present indication LED/input
- 6 XLR/dual RCA inputs switchable between mic and line level plus dual RCA line level inputs
- Optional remote VCA/Tone generator/ Muting boards (AM Mute1 & AM Mute3) available
- Phantom power individually switchable for mic inputs
- 15dB \pm gain trim control per input
- 24VDC or mains power operation
- 3 Stage Master EQ



MX 81 8 channel mono mixer

- 8 input mono 1RU mixer
- Treble and bass control per input
- Whisper quiet operation
- Phantom power individually switchable per input
- 8 XLR/6 dual RCA inputs switchable between mic and line level plus dual RCA line level inputs
- Input 1 is switchable to be pre/post master
- Optional remote VCA/Tone generator/ Muting boards (AMMute1 & AMMute3) available
- 15dB \pm gain trim control per input
- 24VDC or mains power operation
- Dual colour signal present indication LED per input



MX 82 8 channel stereo mixer

- 8 input 1RU stereo mixer
- Headphone output (can be pre/post master)
- Treble and bass control per input available
- Removable label plate (not shown) doubles as an EQ security cover
- 4 XLR inputs switchable between mic & line level, each with direct output
- ± 15 dB of gain trim colour signal present LED indication
- Optional remote VCA/Tone generator/ Muting boards (AMMute1 & AMMute3)
- 4 stereo dual RCA line level inputs
- Phantom power individually switchable for XLR inputs



MX 883 Stereo mixer with link function

- 8 input 2RU stereo mixer with Aux buss
- Left, Right and Aux assignment per channel
- Direct output (TRS) per channel
- 15dB gain trim per input
- 8 XLR mic/ line, and stereo RCA inputs with LED status indication
- 5 band constant Q graphic EQ on Left/Right outputs
- Low noise/high performance for live sound & critical applications
- 4 segment output metering for main outputs
- Treble & Bass controls per channel
- Stereo output
- Link buss to link two Mx883s
- Auxiliary buss (third output)



AMIS 26 2 x 6 distribution amplifier

Compact and with very low noise characteristics, the flexibility of the AMIS 26 is only matched by its high performance. The AMIS 26 makes distributing mic or line level signals simple.

- 2 inputs, 6 outputs
- Mic or line level inputs & outputs — can be used as a mic splitter
- Individual input & output gain controls
- High audio spec
- 24VDC phantom power
- Extremely low noise

ZONING SOLUTIONS



DIGIPAGE

Australian Monitor's DigiPage is a 3RU multi-zone paging and source selection system that offers unprecedented flexibility for multi-zone paging and source routing applications. Six program inputs and one dedicated local mic/line input are available to each of the eight zone outputs. With LED indication for program/local input selection, zone output level, paging enable/disable and network busy, the DigiPage provides extensive status indication to the user.

DIGIPAGE CAT-5 CABLE LIMITS

(4 runs per DigiPage) - for maximum flexibility

COMBINATION	MAX. DISTANCE PER PORT (M)
1 x Wall Plate	500
4 x Wall Plate	125
1 x Mic	250
2 x Mic, 1 x Wall Plate	100
2 x Wall Plate	250
1 x Mic, 3 x Wall Plate	100
1 x Mic, 1 x Wall Plate	165
3 x Mic	80
3 x Wall Plate	165
2 x Mic, 2 x Wall Plate	80
2 x Mic	125
3 x Mic, 1 x Wall Plate	70
1 x Mic, 2 x Wall Plate	125
4 x Mic	62.5

The DigiPage is also expandable to 16 zones via a simple link cable to a second unit. Paging stations are available in 8 or 16 zone models, allowing paging into any individual zone, any combination of zones or All Call. Remote control panels are also available, allowing source selection and volume control from within each remote zone. Both paging stations and remote control panels connect via inexpensive and industry standard CAT-5 cable. An overall priority input is also provided for emergency or evacuation signals. The DigiPage is an incredibly versatile and well featured product that provides a simple solution to the complex applications of multi-zone paging and source routing.

DIGIPAGE JR.



The Australian Monitor DigiPage Junior starts as an eight zone system and can be expanded to 16 zones with the addition of a second DigiPage Junior base station. The DigiPage Junior is packed with excellent features and allows source routing from its front panel and a remote paging facility via its remote paging stations.



DPRM: Digipage remote wall panel

The Australian Monitor DPRM DigiPage remote wall panels are a remote control surface designed for use with the DigiPage system. The DPRM allows control over source selection, local input selection and volume control over from within a remote zone. LED indication provides the user with visual feedback if the system is busy. The DPRM is connected to the DigiPage via ACT-5 cable. Available in black (DPRMB) or white (DPRMW)

ACCESSORIES:

DigiPage 8M: 8 zone paging station • DigiPage16M: 16 zone paging station •
DPRM: remote wall panel • DPJR8M: 8 zone paging station • DPJR16M: 16 zone
paging station

- 4 mic or line level program source inputs with trim pots
- Capacity for up to 8 remote paging microphones
- Emergency input
- 4 CAT-5 ports which are used to connect to remote zone paging microphones
- Alert, Evacuation, Bell and Pre Announce Chimes
- Priority Ducking Circuitry
- Easy front panel input selection
- Separate paging volume level adjustment
- Treble and Bass control per zone
- Page 'Enable' per zone allows users the ability to remove to page into certain zones in case that zone does not want to be interrupted
- One paging microphone can be set to have ultimate priority over other paging microphones
- AC/DC operation
- Add a second DigiPage Junior for 16 zones

ZONING SOLUTIONS



ZONE MIX 3

The Australian Monitor Zone Mix 3 (ZM3) offers exceptional performance for both foreground and background music applications. Designed for foreground/background BGM applications, its generous mix of universal inputs, five stage EQ, stereo outputs & remote paging, source selection & volume control make a formidable package.

- 4 stereo & 2 mic/line inputs assignable to all/any outputs
- 3 stereo zone outputs
- Five stage EQ per zone
- Internal switchable VOX muting/ducking for mics over line sources
- Link output for a second unit (6 stereo zones)
- A SUM input for ultimate priority
- Optional remote source and volume selection per zone via CAT-5 cable
- Optional remote paging microphone via CAT-5 cable
- Integral security covers for EQ and gain sections of the Zone Mix 3
- Separate bass and treble controls for paging and mic/line inputs

ACCESSORIES: ZM3M: Remote microphone paging station • ZM3R: Remote source and volume control



ZONER 16

The Australian Monitor Zoner 16 is a simple 16 zone 100 V line output switcher. It also provides remote zone paging facility, zone disable buttons, LED indication per active zone, zone logic output as well as separate BGM and paging inputs. The Zoner 16 makes remote paging into single, multiple zones and all call, as well as selectable BGM, a simple task. For simple installations without background music, only a single 100V amplifier is required to cover all zones. When used with background music, a second amplifier is required.

- 16 zone output switcher
- Remote paging station available
- 'Front Panel' BGM selection (when using a second amplifier)
- 'ALL CALL' priority input
- Logic output per zone
- 24VDC or AC mains operation
- Multi-zone paging made simple
- Optional tone module available (ATC5488)

ZRM 4

The Australian Monitor ZRM4 is a 6 input Zone Routing Mixer that allows all 6 inputs to be routed to any of, or all 4 zone outputs. With simple front panel level control and zone assign switches with LED indication, the ZRM4 makes multi-zone routing easy.

- 6 XLR/dual RCA inputs switchable between mic and line level plus dual RCA line level inputs
- 4 mono outputs/zones
- Treble and bass control per input
- In-built bell, alert, evac and pre announce chimes
- Individual remote master VCA control for all four outputs/zones
- In-built priority/ducking circuit switchable per output
- Clear indication of zone selection from front panel LEDs



Optional RC1 remote volume control



AMPLIFIERS WITH DSP



ISP SERIES



The ISP Series is Australian Monitor's premium offering of network controllable Class D power amplifiers, delivering high quality audio reinforcement with the power you need in the following options –

- Dual channel 120W or 250W
- Quad channel 120W or 250W

The ISP power amplifiers are featured packed including ethernet control, embedded web browser user interface, DSP, ErP Standby Compliant and Dante® support via an expansion module.

The ISP series power amplifiers give the AV contractor a reliable, feature rich amplifier for applications that demand the highest performance with ease of use.



- IS2120P – 2x120W, IS2250P – 2x250W
- IS4120P – 4x120W, IS4250P – 4x250W
- 4Ω and 70V / 100V outputs
- Class D amplifier technology
- Ethernet control
- Embedded User Interface via web browser
- DSP:
 - Volume control
 - Matrix Mixer
 - High/Low/All pass filters
 - 12 band parametric equaliser per channel
 - Compressor/Limiter
 - Delay up to 75ms(220ms) per amplifier output
 - Audio level sense for standby/auto-wake
- Four software configurable external input/ outputs
- Dedicated external standby contact closure
- Open control interface for third party integration
- Dante® 4In,4Out expansion card option
- Analogue 4In expansion card option
- Rack mount size
- 1 RU for 2 channel amplifiers
- 2 RU for 4 channel amplifiers
- Fan cooled
- Universal switchmode PSU with PFC
- ErP (1275/2008/EC) Standby Compliant, less than 2W

	IS2120P	IS2250P	IS4120P	IS4250P
AMPLIFIER CHANNELS	2	2	4	4
MAX POWER OUTPUT PER CHANNEL	120W	250W	120W	250W
AMPLIFIER TOPOLOGY	Class-D			
FREQUENCY RESPONSE 4Ω	20Hz ~ 20kHz			
FREQUENCY RESPONSE 70/100V	75Hz ~ 16kHz			
SIGNAL TO NOISE RATIO	> 100dB			
THD+N. 4Ω. 1kHz	< 0.05%			
THD+N. 100V. 1kHz	< 0.08%			
USER INTERFACE	Embedded user Interface accessed via web browser			
ETHERNET	RJ45, 100BASE-T with Auto MDI-X			
ADDITIONAL FEATURES	Four general purpose input/outputs. Software configurable. Dedicated standby contact closure input			
DIMENSIONS (W X D X H)	435mm x 325mm x 44mm		435mm x 389mm x 89mm	
DM4X4	4 Input, 4 output Dante® transceiver card			
ANALOGUE4	4 Input Analogue Input card			

AMPLIFIERS WITH DSP



HSP SERIES



The HSP Series is Australian Monitor's next generation of controllable Class D power amplifiers, delivering high quality audio reinforcement with the power you need in the following options – Single channel 120W or 250W, Dual channel 120W or 250W and Quad channel 120W or 250W.

Our new power amplifiers are fully featured, including an efficient Class D amplifier, USB and RS232 control and a mini DSP featuring volume control, mute, compressor/ limiter and input channel selection.

The HSP series power amplifiers give the AV contractor a reliable amplifier for applications that are price sensitive yet still require high quality commercial sound reinforcement and control.

- HS120P – 1x120W, HS250P – 1x250W
- HS2120P – 2x120W, HS2250P – 2x250W
- HS4120P – 4x120W, HS4250P – 4x250W
- Class D amplifier technology
- USB and RS232 control
- Software graphic user interface control
- miniDSP: Volume control, muting, High/Low pass filter, Compressor/Limiter, Input channel selection, Invert
- External Mute, Standby and Fault control
- Signal, clip and protection indicators
- Universal switchmode PSU with PFC
- 4Ω and 70V / 100V outputs
- Rack mount size
 - 1 RU for 1 and 2 channel amplifiers
 - 2 RU for 4 channel amplifiers
- Fan cooled

PC APPLICATION USER INTERFACE



	HS120P	HS250P	HS2120P	HS2250P	HS4120P	HS4250P
CHANNEL	1	1	2	2	4	4
POWER OUTPUT PER CHANNEL	120W	250W	120W	250W	120W	250W
FREQUENCY RESPONSE 40hm	20Hz~20kHz	20Hz~20kHz	20Hz~20kHz	20Hz~20kHz	20Hz~20kHz	20Hz~20kHz
FREQUENCY RESPONSE 100V	100Hz~16kHz	100Hz~16kHz	100Hz~16kHz	100Hz~16kHz	100Hz~16kHz	100Hz~16kHz
AUDIO INPUT CONNECTORS	1x3 euroblock plug (3.81mm)					
AUDIO OUTPUT CONNECTORS	6 pin Screw Terminal per channel					
COMMUNICATION	Front Panel – USB 1.1 (mini type B) Rear Panel – RS232 (1x3 euroblock plug 3.81mm)					
MOUNTING	1RU	1RU	1RU	1RU	2RU	2RU
DIMENSIONS (H x W x D) mm	44 x 483 x 328	44 x 483 x 328	44 x 483 x 328	44 x 483 x 328	89 x 483 x 389	89 x 483 x 389

MIXER AMPLIFIERS WITH BLUETOOTH



HS SERIES



The HS series is Australian Monitor's next generation of Class D mixer amplifiers, delivering high quality audio reinforcement with the power you need – 60, 120, 250 and 500 watt options, all in a one rack unit package. Our new amplifiers are fully featured, offering 7 external and 2 internal audio input channels, each channel offering individual channel volume control, equalizer and gain control. An inbuilt user-customizable tone generator, MP3 player, Bluetooth module, 3.5mm jack and USB charger are included as standard in all models. The HS series has been designed with all of the features and power to suit a vast range of installations, from the boardroom to the classroom, school hall to bar, restaurant or function space

- 60W, 120W, 250W and 500W models
- 9 audio input channels. 6 rear & 3.5mm Jack, Bluetooth and MP3
- Priority mute control on channels 1-3, with level and time release control
- MIC or Line options on rear inputs
- Magnetic cover for customer concealed eq and gain controls
- Voltage controlled input attenuation (VCA)
- Clip/Thermal/Short and Under/Over voltage protection
- Embedded tone generator for bell/alert/evac/ chime/ intruder plus 11 fully customisable user tones
- Bluetooth 3.0+EDR audio receiver supporting advanced audio distribution profile (A2DP)
- 4Ω / 70V and 100V outputs
- Individual gain/equalisation control on all external audio inputs
- Phantom power on rear inputs
- Individual channel attenuation on rear inputs
- Tamper-proof channel attenuation by disabling external volume controls
- Signal, Status, Clip Protection indicators
- 1 RU rack mount size
- Embedded MP3 player via onboard SD card socket – supporting random, sequenced and single playback

HSMIX

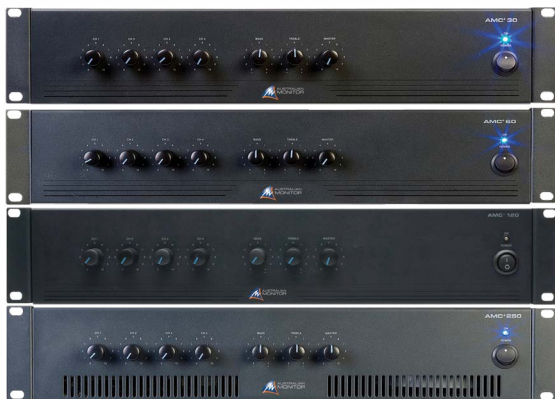


All the features of the HS Series amplifiers in a 1RU mixer including

- 9 audio input channels. 6 rear mic/line & front, 3.5mm line, Bluetooth and MP3 player. 12 VDC phantom power
- Individual gain/equalisation control on all external audio inputs
- Embedded tone generator for bell/alert/evac/chime/ intruder plus 11 fully customisable user tones
- Embedded MP3 player via onboard SD card socket supporting random, sequenced and single playback
- 1 line level output
- Priority mute control on channels 1-3, with level and time release control
- Priority mute control on channels 1-3, with level and time release control
- Magnetic cover for customer concealed eq and gain controls
- Bluetooth 3.0+EDR audio receiver supporting advanced audio distribution profile (A2DP)
- Tamper-proof channel attenuation by disabling external volume controls

	HS60	HS120	HS250	HS500
CHANNEL	1	1	1	1
CONTINUOUS MAX. POWER OUTPUT	60W	120W	250W	500W
FREQUENCY RESPONSE 40hm	20Hz~20kHz	20Hz~20kHz	20Hz~20kHz	20Hz~20kHz
FREQUENCY RESPONSE 100V	100Hz~16kHz	100Hz~16kHz	100Hz~16kHz	100Hz~16kHz
EXTERNAL AUDIO INPUTS	3 XLR/RCA Inputs with MIC/LINE level control, 3 Euro/RCA Inputs with MIC/LINE level control, 3.5mm front panel audio jack			
INTERNAL AUDIO INPUTS	Bluetooth Audio Input, MP3 Player input			
TONE GENERATOR	5 default tones + 11 user customisable tones			
BLUETOOTH	Bluetooth 3.0 + EDR supporting A2DP profile			
MP3 SUPPORTED FORMATS	MPEG-1 Audio Layer III support - Full bit rate support. CBR,ABR,VBR WAV - 16 or 24 bit - 32kHz, 44,1kHz, 48kHz, 88.2kHz, 96kHz,176.4kHz, 192kHz			
DIMENSIONS (H x W x D) mm	44 x 438 x 306	44 x 438 x 306	44 x 438 x 406	44 x 438 x 406

MIXER AMPLIFIERS/ BOOSTER AMPLIFIERS



AMC+ SERIES

The Australian Monitor AMC+ takes the rugged reliability of Australian Monitor mixer amplifiers and delivers the same high quality audio reinforcement, in a low cost, 2 rack unit package.

AMC+ 30

- 30W
- 2RU rack mountable chassis
- 4 XLR microphone/dual RCA line inputs
- 100V or 4 Ω output
- Input 1 vox muting priority (internally defeatable)
- Alert/Evac/Pre Announce/Bell tone board available
- 12VDC phantom power priority

AMC+ 60

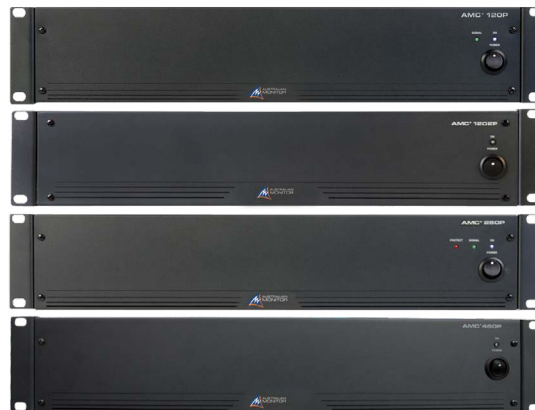
- 60W
- 2RU rack mountable chassis
- 4 XLR microphone/dual RCA line inputs
- 100V or 4 Ω output
- Input 1 vox muting priority (internally defeatable)
- Alert/Evac/Pre Announce/Bell tone board available
- 12VDC phantom power

AMC+ 120

- 120W
- 2RU rack mountable chassis
- 4 XLR microphone/dual RCA line inputs
- 100V or 4 Ω output
- Input 1 vox muting priority (internally defeatable)
- Alert/Evac/Pre Announce/Bell tone board available
- 12VDC phantom power

AMC+ 250

- 250W
- 2RU rack mountable chassis
- 4 XLR microphone/dual RCA line inputs
- 100V or 4 Ω output
- Input 1 vox muting priority (internally defeatable)
- Alert/Evac/Pre Announce/Bell tone board available
- 12VDC phantom power



AMC+P SERIES

The AMC+ power amplifiers give the audio contractor a reliable power amplifier for applications that are price sensitive yet still require high quality commercial sound reinforcement.

AMC+ 120P

- 120W @ 100V, 70V, 4 Ω
- 2RU
- Rear panel volume control
- Balanced input and thru out priority

AMC+ 1202P

- 2 x 120W @ 100V, 70V, 4 Ω
- 2RU
- Rear panel volume control
- Balanced input and thru out

AMC+ 250P

- 250W @ 100V, 70V, 4 Ω
- 2RU
- Rear panel volume control
- Balanced input and thru out
- Fan cooled

AMC+ 460P

- 60W Quad Channel Amp
- 100V, 70V and 4 Ω outputs
- Rear panel gain control
- Balanced XLR input and thru output
- 2RU
- Fan cooled



DCM 500 500W booster amplifier

- 2RU single channel 500W power amplifier
- 230~240VAC/ 24VDC operation
- Overload and overdrive protection
- Fan cooling with auto temperature sensing
- Built-in emergency trickle charge circuitry
- Transformer balanced XLR input and output
- Output level 10 stage LEDs
- 100V, 70V and 4 Ω outputs

POWER AMPLIFIERS

SLA SERIES

The SLA are 2RU power amplifiers and include 9 models, both dual and 4 channel. The SLA Series provides a broad choice of power output extending to 2 Ω operation so you can select a model that will ideally match the power requirements for your application. For even further flexibility all models can operate in 3 modes: dual channel mode; parallel (mono) mode; and bridge mode. The SLA Series power amplifiers employ a large number of matched complementary devices in parallel having linear transfer characteristic for low distortion and high SOA guaranteeing safe operation at elevated power levels.



- 2 Ω operation
- High SNR
- Heavy-duty power supply for high dynamic power
- Variable-speed twin fan back-to-front cooling
- LED indicators for metering, status, and operating mode
- Soft start
- Low THD, IMD
- Short-circuit, thermal, output DC, RF protection
- Neutrik Speakon® and binding post output connectors

	SLA2003	SLA2004	SLA2006	SLA2008	SLA2010	SLA2013	SLA2015	SLA2104	SLA2106
CHANNELS	2	2	2	2	2	2	2	4	4
	Output Power (RMS), all channels driven								
8Ω	300W	400W	600W	800W	1000W	1300W	1500W	400W	600W
4Ω	450W	600W	900W	1200W	1500W	1950W	2250W	600W	900W
2Ω	510W	680W	1020W	1360W	1700W	2300W	2550W	NA	NA
8Ω BRIDGED	900W	1200W	1800W	2400W	3000W	3900W	4500W	1200W	1800W
4Ω BRIDGED	1100W	1480W	2220W	3000W	3700W	4810W	5550W	NA	NA
CLASS	AB	AB	H	H	H	H	H	AB	H
THD @ RATED PW	< 0.1%	< 0.1%	< 0.1%	< 0.1%	< 0.1%	< 0.1%	< 0.1%	< 0.1%	< 0.1%
DAMPING FACTOR	>300	>300	>300	>300	>300	>300	>300	>300	>308
SIGNAL TO NOISE RATIO	100dB	101dB	103dB	104dB	105dB	106dB	107dB	101dB	103dB
FREQUENCY RESPONSE	20Hz~20kHz, ± 0.5 dB								
INPUT CONNECTORS	XLR with link								
OUTPUT CH CONNECTORS	Twist-lock speaker socket, binding posts								
AMPLIFIER LOAD PROTECTION	Short circuit, output DC, thermal, RF, internal fault, input overload, HF overload, mismatch load, mains inrush current.								
FRONT PANEL CONTROL	Clip/protect indicator. 6 steps volume level indicator. 21 detent volume level control								
REAR PANEL CONTROL	DIP switch for stereo, parallel, bridge. Dip switch for 2 sensitivity settings.								
DIMENSIONS (WXDXH)MM	483 x 457 x 88								
WEIGHT	17kg	19kg	21kg	23kg	25kg	27kgs	28kg	23kg	26kg
AGENCY APPROVALS	CE, BIS IS 616-2010								

POWER AMPLIFIERS/ EQUALIZERS



AV2.2P

- 2 x 100W @ 4Ω / 2 x 75W @ 8Ω
- 1RU chassis
- Convection cooled design for whisper quiet operation
- Ground lift switch
- Outstanding sonic performance
- Perfect for boardrooms, lecture theatres and houses of worship



AV2.4P

- 2 x 200W @ 4Ω / 2 x 150W @ 8Ω
- 2RU chassis
- Convection cooled design for whisper quiet operation
- Ground lift switch
- Outstanding sonic performance
- Perfect for boardrooms, lecture theatres and houses of worship



SSP 2015

The SSP 2015 is a 1RU 31band 2/3rd octave dual channel constant Q Stereo Graphic Equalizer. The SSP 2015 is designed to cater to live or recording environments and audio projects where specific frequency gain regulation is necessary globally.

- Two 15-band, 2/3-octave Constant Q freq. bands.
- Switchable boost/cut ranges of $\pm 6\text{dB}$ or $\pm 12\text{dB}$
- 12dB per octave 50Hz low-cut filter
- Front-panel bypass switch
- $\pm 12\text{dB}$ input gain range
- 4-segment LED ladders for monitoring output levels
- XLR and TRS Inputs and Outputs
- Frequency Response of $<10\text{Hz} \sim >50\text{kHz}$
- Dynamic range of greater than 112dB

SSP 2025

The SSP 2025 is a 3RU 31band 1/3rd octave dual channel constant Q Stereo Graphic Equalizer with Noise Reduction. The SSP 2025 is designed to cater to live or recording environments where specific frequency gain regulation is necessary globally.

- Two 31-band, 1/3-octave Constant Q freq. bands
- Noise Reduction capable of restoring up to 20dB S/N ratio.
- Limiter (0dBu to +24dBu)
- Switchable $+6\text{dB}$ and -15dB gain
- 18dB/octave 40Hz Bessel low-cut filter
- Ground lift
- $-12\text{dB} \sim +12\text{dB}$ input gain range
- XLR, TRS and Barrier strip connectors
- Power-off hard-wire relay bypass with 2sec power up delay

SSP 3020

The SSP 3020 is a 1RU Stereo 2 way/ 3 way or Mono 4 way crossover featuring extremely low noise and rugged built for reliability. The SSP 3020 is designed with precision 24db per octave filters.

- Stereo 2-way/3-way or 4-way mono crossover.
- Back panel switches for selecting the operating mode of the crossover.
- Low frequency summed output designed specifically for mono subwoofer applications.
- Phase invert switches on all outputs.
- Back panel switches indicating the selected range of crossover frequencies. Both of these features have LED indicators on the front panel so you can see at a glance which mode the unit is in.
- Individual level controls on every output.

ACCESSORIES



CONTRACTOR TOOLS



LETS SPLIT (L) is a balanced line level splitter with a balanced XLR line level input which provides both a transformer balanced XLR output and a thru (direct) XLR output of the input signal.



GET DOWN stereo converter converts a professional line level balanced audio signal to an unbalanced domestic level signal.



DROP ME allows you to convert a 100V line amplifier speaker output signal to a balanced line level signal.



JUICED UP is a 2 channel phantom power supply that features balanced XLR inputs and outputs per channel.



PRE ME is a compact yet highly featured microphone pre amplifier. It features dual RCA line input and a balanced XLR input switchable between mic and line level.



THE INJECTOR is a passive direct injection box which offers a 6.35mm input, 6.35mm thru output (direct) and a balanced XLR output.



LETS SPLIT (M) is a balanced mic level splitter with a balanced XLR mic level input which provides both a transformer balanced XLR output and a thru (direct) XLR output of the input signal.



GET UP stereo converter converts an unbalanced domestic level signal to a professional line level balanced audio signal.



MULTICAN is a compact yet high quality 4 channel headphone amplifier, featuring 6.35mm TRS, dual RCA and dual XLR stereo inputs and 6.35mm TRS headphone outputs.



BUZZ OFF is a two channel hum eliminator featuring both balanced XLR inputs and outputs and unbalanced RCA inputs and outputs per channel.



MIXED UP is a passive 4 channel mixer which features 2 balanced XLR microphone inputs and 2 dual RCA line inputs and a single microphone level balanced XLR output.



ZONED OUT is a simple way to have up to 6 zone output zone switching in your installation.



GET OUT is a 2 channel USB audio interface

SPEEDRACK

Since their introduction, Speedracks have become a 'must-have' for savvy installers. Flat packed, strong, available in three sizes and available in a number of cost-saving formats, Speedracks offer contractors a very smart solution.

As mentioned above, Speedracks are available in three sizes – 10RU, 18RU and 21RU. All racks come with the necessary hardware and cage nuts/bolts.

And remember, with Speedracks, you just buy what you want. If you don't need a panel set, don't order it. If you don't need a door, don't order it. Smart hey!

RACK COMPONENTS

SRF10	10 RU frame
SRF18	18 RU frame
SRF21	21 RU frame
SRPS10	10 RU panel set (L, R and top). Including fixings
PS18	18 RU panel set (L, R and top). Including fixings
SRPS21	21 RU panel set (L, R and top). Including fixings
SRBP	Bottom panel. Including fixings
SRCD10	10 RU lockable door - clear
SRCD18	18 RU lockable door - clear
SRCD21	21 RU lockable door - clear
SRLF10	10 RU display rack - slanted

ACCESSORIES

SRT2	2 RU tray
SRT3	3 RU tray
SR4WS	4 wheel set
SRVP1	1 RU vent panel
SRVP2	2 RU vent panel
SRBP1	1 RU blank panel
SRBP2	2 RU blank panel
SRBP3	3 RU blank panel
SRBP4	4 RU blank panel
SRSCC2	2 RU Clear Security Panel
SRSCP2	2RU Perforated Security Panel
SRNBW20	20 piece cage nut, bolt and washer set



Speedrack 21RU

RACK DIMENSIONS

10RU Rack	545 x 550 x 465
18RU Rack	900 x 550 x 465
21RU Rack	1037 x 550 x 465



SRT2



SRF10

WMA 25/50/100 CW ATTENUATORS

Australian Monitor offers a full range of wall mount, constant voltage and low impedance attenuators in stainless steel or white

WMA 25CW	25W/100V	50H x 50W x 55D
WMA 50CW	50W/100V	50H x 50W x 55D
WMA 100CW	100W/100V	50H x 50W x 55D



PASSIVE VOLUME CONTROLS

The following line matching volume controls are available to make your distributed sound installation a great sounding one:

Volume controls:	De VC1005: 5W; 100V
	De VC1015: 15W; 100V

ENGINEERED SOLUTIONS FOR INSTALLATIONS

- Wide range of 100V and direct coupled products with 3rd party control
- Solutions for a wide array of applications
- Central design support
- Central logistics support
- National service support



CORPORATE



GYMNASIUM/SPA



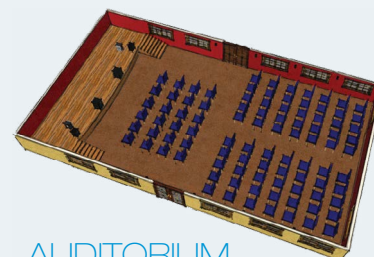
RESTAURANT



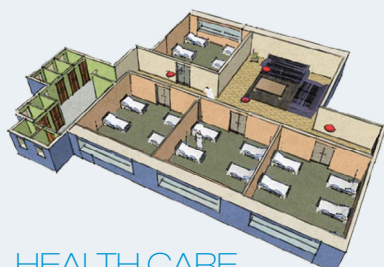
RETAIL



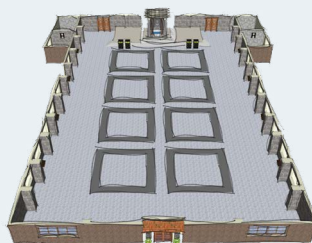
HOTEL



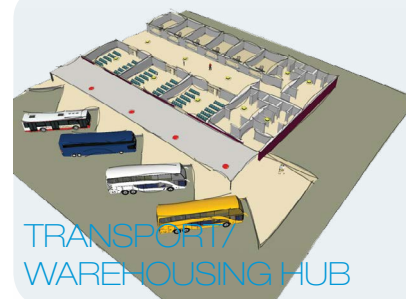
AUDITORIUM



HEALTH CARE



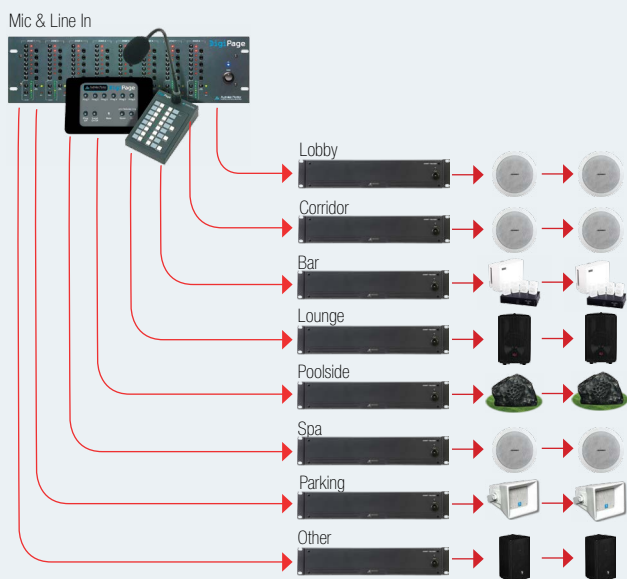
PLACE OF WORSHIP



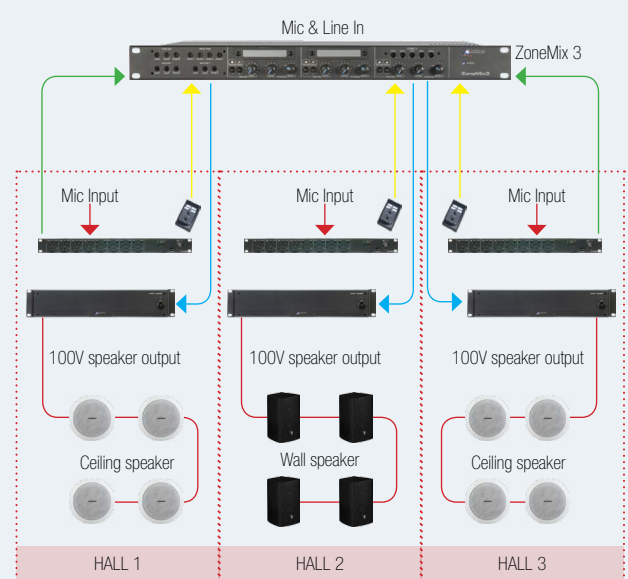
TRANSPORT/
WAREHOUSING HUB

PUBLIC ADDRESS BACKGROUND MUSIC PERFORMANCE SOLUTIONS

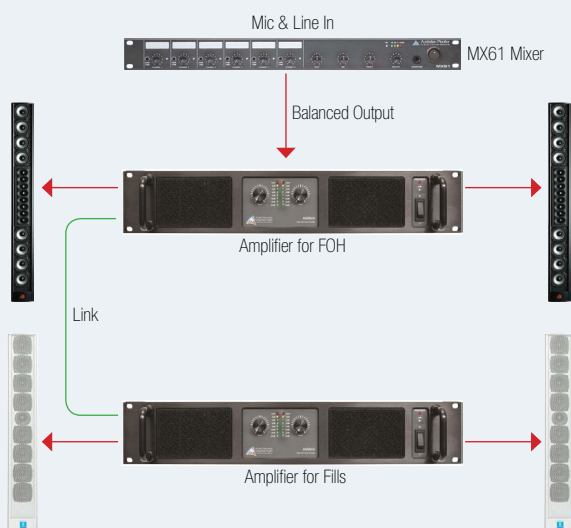
LARGE MALL/ HOTEL



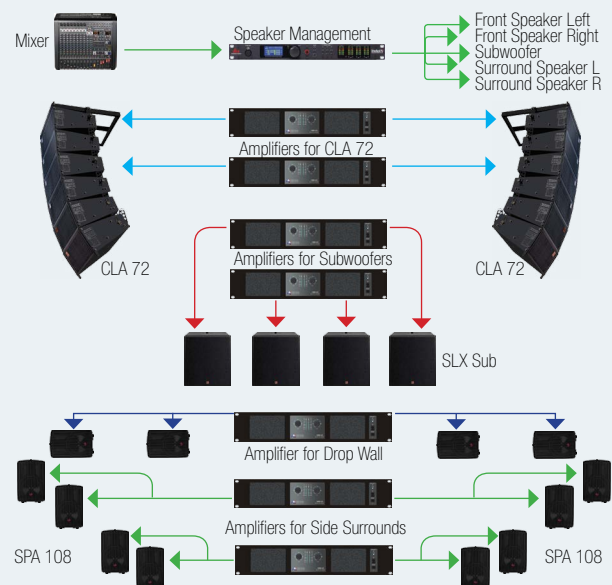
BANQUET HALL



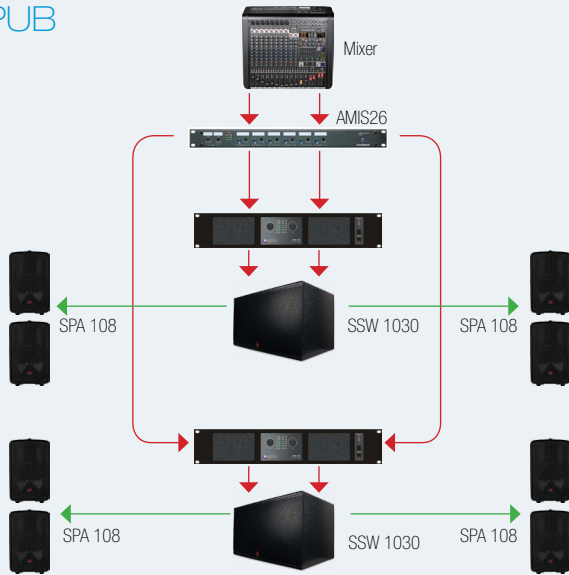
LECTURE HALL



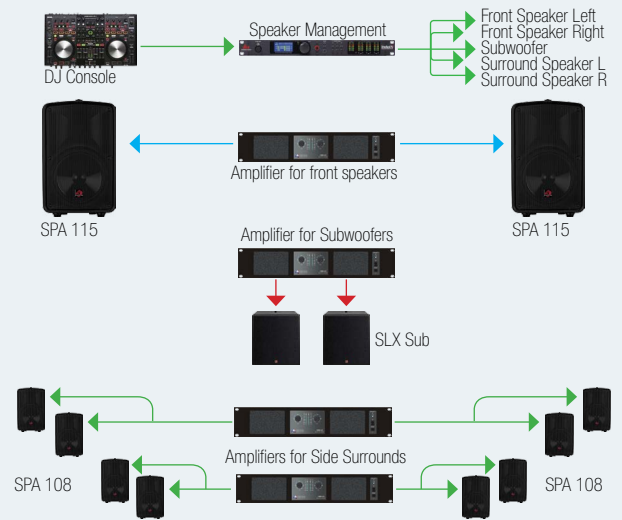
AUDITORIUM



PUB

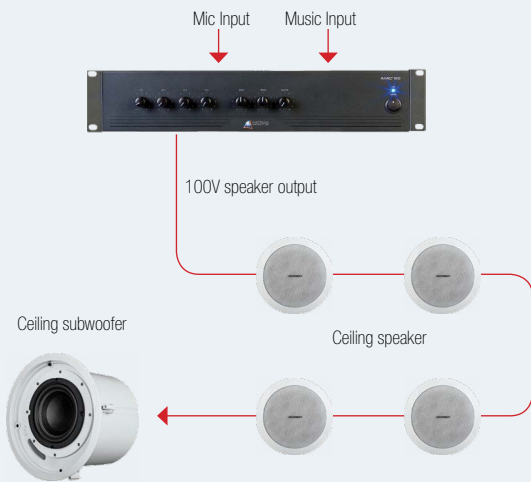


PUB WITH DANCE FLOOR



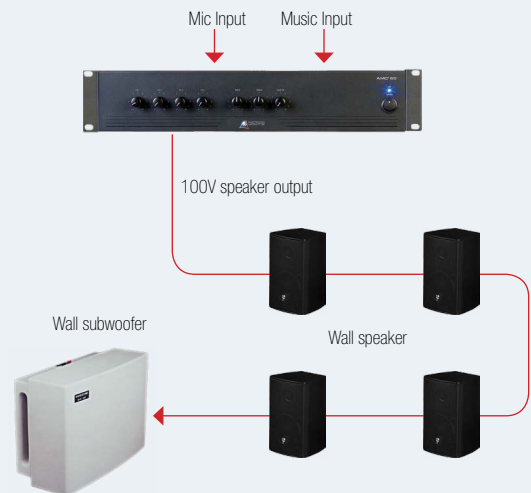
SMALL SHOP/ RESTAURANT

Ceiling Speakers & Optional Subwoofer with Amplifier- Mono, 100V/ 70V



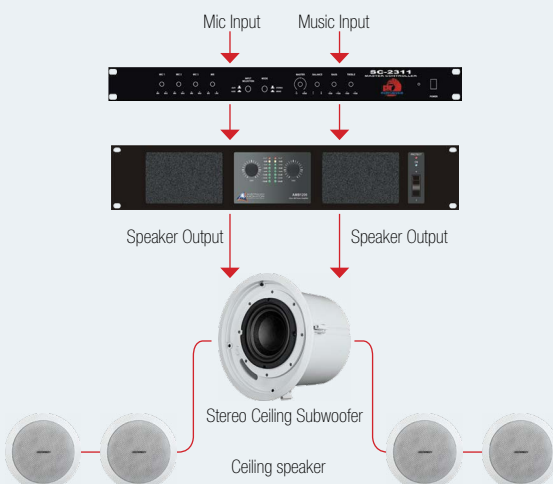
SMALL SHOP/ RESTAURANT

Wall Speakers & Optional Subwoofer with Amplifier- Mono, 100V/ 70V



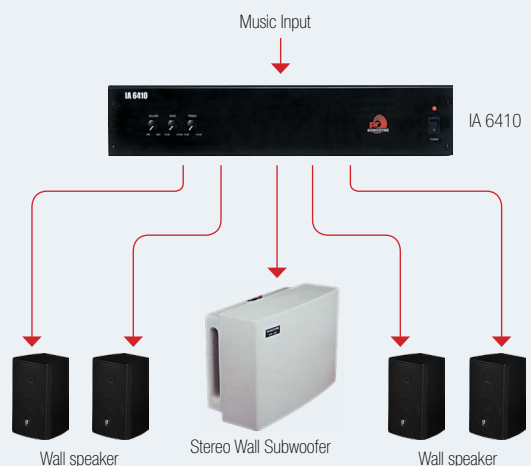
SMALL SHOP/ RESTAURANT

Ceiling Speakers & Optional Subwoofer with Amplifier- Stereo, 100V/ 70V



SMALL SHOP/ RESTAURANT

Wall Speakers & Subwoofer with Amplifier- Stereo, direct mode



Represented by

SONODYNE®

Products of the **MUKHERJEE INNOVATION CENTRE**

SONODYNE, 98 NB Block E New Alipore, Kolkata 700053, INDIA 1-800-123-37-36 • response@sonodyne.com • www.sonodyne.com

Visit SONODYNE INDIA for exciting offers and promotions

