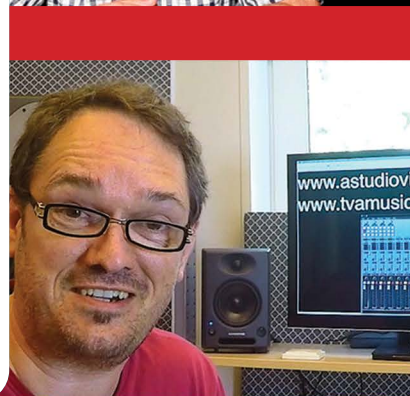




2023

residential solutions
- catalogue -



OVER
50
YEARS OF
AUDIO EXCELLENCE



The SRP translates very well at low and high volume
~ **EDDIE KRAMER**, Grammy Award winner
The Beatles, David Bowie, Eric Clapton, Jimi Hendrix, Kiss, Led Zeppelin

No mix is finished until I check it on a Sonodyne
~ **TOM LORD ALGE**, Grammy Award winner
U2, The Rolling Stones, Peter Gabriel, Dave Matthews Band, Avril Lavigne

They are powerful, well-balanced and honest to the ears,
what more could one want!
~ **RECORDING MAGAZINE, USA**

These Sonodyne speakers sound amazing
~ **LESLIE BRATHWAITE**, Grammy nominated mix engineer
Beyonce, Jay Z, Madonna, T.I., Pharrell Williams, Akon

For a little speaker it has an amazingly good bass response
~ **JOSH BLAIR**, Producer/ Engineer
Duran Duran, Bruno Mars, Beyonce

You have to find your Sonodyne product for your taste, but
you will never find a better product for the price.
~ **GEORGE NECOLA**, Gearspace

I was very impressed
~ **BOB POWER**, Grammy Award winner
Erykah Badu, A Tribe Called Quest, Citizen Cope, De La Soul, India Arie

Sonodyne conveys sound in it's purest form
~ **USTAD ZAKIR HUSSAIN**, Indian tabla virtuoso

As the crown jewel of the Indian hi-fi manufacturing industry,
Sonodyne has been on top of its game for a while now.
~ **WHAT HiFi? India**

INDEX

SRP SERIES	<i>Active speakers</i>	1 & 2
SRT SERIES	<i>Active speakers</i>	3 & 4
AVANT SERIES	<i>Passive speakers</i>	5 & 6
SONUS SERIES	<i>Passive speakers</i>	7 & 8
IWO SERIES	<i>In-wall/ on-wall passive speakers</i>	9 & 10
MICRO HTS	<i>Hiome theatre system</i>	11
SIC SERIES	<i>In-ceiling speakers</i>	12
ROAR SERIES	<i>Powered subwoofers</i>	13
SUB SERIES	<i>Powered subwoofers</i>	14
DE4348	<i>Multi-channel processor</i>	15

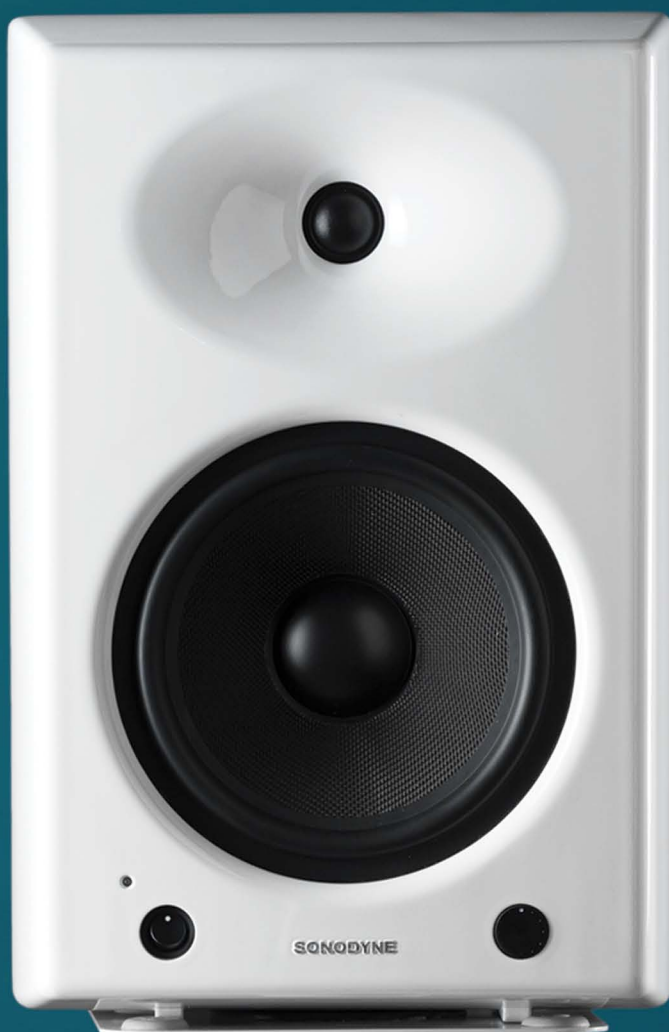


*Sonodyne conveys sound
in its purest form*

~ Ustad Zakir Hussain



SRP 200



SRP 205



SRP 203



SRP 202

SRP 204



SRP 201

This is a range of multi-functional active speakers. They sound stunning. They look stunning. And there is a size for every application.

From the smallest 201 to the largest 205, we have your sound need covered. Be it for high grade background or multi-room, or for multimedia, or pure stereo or home theatre, we can configure a solution using the SRPs.

The solid aluminum enclosures give this range unparalleled rigidity and a compact, unique shape. The HF waveguide is unique for each transducer and an integral part of the moulded enclosure. Colour and placement options make this a very installer-friendly range.



SRP 205



SRP 204



SRP 203



SRP 202



SRP 201

	SRP 205	SRP 204	SRP 203	SRP 202	SRP 201
ENCLOSURE	Pressure die-cast aluminum	Pressure die-cast aluminum	Pressure die-cast aluminum	Pressure die-cast aluminum	Pressure die-cast aluminum
TRANSDUCERS	LF: Magnetically shielded 8" Kevlar cone woofer In die-cast chassis HF: 26mm silk dome neo dymium magnet tweeter with custom waveguide	LF: Magnetically shielded 6.5" Kevlar cone woofer In die-cast chassis HF: 26mm silk dome neo dymium magnet tweeter with custom waveguide	LF: Magnetically shielded 5.25" Kevlar cone woofer In die-cast chassis HF: 26mm silk dome neo dymium magnet tweeter with custom waveguide	LF: Magnetically shielded 4.5" CURV cone woofer In die-cast chassis HF: 26mm silk dome neo dymium magnet tweeter with custom waveguide	LF: Magnetically shielded 3" glass fibre cone woofer In die-cast chassis HF: 26mm silk dome neo dymium magnet tweeter with custom waveguide
AMPLIFIER POWER	LF: 150W, HF: 100W	LF: 80W, HF: 50W	LF: 50W, HF: 50W	LF: 25W, HF: 25W	LF: 15W, HF: 15W
MAX. LONG TERM SPL	112dB (half space)	107dB (half space)	104dB (half space)	100dB (half space)	95dB (half space)
FREQ. RESPONSE (± 2dB)	42Hz ~ 22kHz	55Hz ~ 22kHz	65Hz ~ 22kHz	75Hz ~ 22kHz	95Hz ~ 22kHz
COLOUR	Red / White / Black	Red / White / Black	Red / White / Black	Red / White / Black	Red / White / Black
DIMENSIONS (WxHxD) mm	291 x 434 x 280	250 x 340 x 240	210 x 279 x 181	160 x 232 x 155	125 x 184 x 120
WALL BRACKET	SRP WB 3	SRP WB 2	SRP WB 2	SRP WB 1	SRP WB 1
FLOOR STAND	SRP FS 2 W/B	SRP FS 2 W/B	SRP FS 1 W/B	SRP FS 1 W/B	SRP FS 1 W/B

SRT



The SRT Series is for the movie connoisseur. It's as close as you will ever get to reliving the big screen movie experience at home. By combining technologies with our professional studio range, the SRT Series brings loud and detailed sound in a shallow profile for easy installation in personal theatres.

SRT 302 and 301 feature trademark kevlar woofers, kevlar midranges and silk tweeters in a rotatable waveguide. Custom passive radiators are used to generate low frequencies from the shallow enclosure which minimises air flow noise. Each of the three frequency bandwidths is individually powered by its own amplifier which is kept in a separate enclosure. Internal processing is via DSP (Digital Signal Processing) which also allows for detailed user calibration.

SRT 301 and 302 are d'Appolito centre speaker configurations for SRT 301V and SRT 302V. The SRT 101 CS is a dedicated controller for SRT 101. The SRT 4200 is a 4 channel power amplifier that can drive 4 SRT 101s or 2 SRT S21s.



SRT 301V

SRT 301

SRT 302V

SRT 302

ENCLOSURE	Heavily braced double MDF sides with aluminium pillars as corners		Heavily braced double MDF sides with aluminium pillars as corners	
TRANSDUCER COMPLEMENTS	Woofer: 2 x 6" kevlar cone woofer, Midrange: 1 x 4" kevlar cone in waveguide, Tweeter: 26mm silk dome with waveguide, 2 x passive radiators		Woofer: 2 x 8" kevlar cone woofer, Midrange: 1 x 5" kevlar cone in waveguide, Tweeter: 26mm silk dome with waveguide, 2 x passive radiators	
AMPLIFIER POWER	LF:200W, MF:75W, HF:50W	LF:200W, MF:75W, HF:50W	LF:275W, MF:75W, HF:50W	LF:275W, MF:75W, HF:50W
AMPLIFIER ENCLOSURE	Separate, rack mountable	Separate, rack mountable	Separate, rack mountable	Separate, rack mountable
MAXIMUM SPL @ 1M	115dB	115dB	118 dB	118dB
FREQUENCY RESPONSE (±2dB)	55Hz ~ 22kHz	55Hz ~ 22kHz	45Hz ~ 22kHz	45Hz ~ 22kHz
COLOUR	Black	Black	Black	Black
DIMENSIONS (HxWxD) mm	770 x 390 x 152	390 x 770 x 152	1125 x 475 x 152	475 x 1125 x 152
MOUNTING OPTION	Wall mount bracket (included)	Wall mount bracket (included)	Wall mount bracket (included)	Wall mount bracket (included)



SRT 101



SRT S21



SRT S22

ENCLOSURE	MDF with extruded aluminium corners	MDF with extruded aluminium corners	MDF with extruded aluminium corners
TRANSDUCER COMPLEMENTS	Woofer: 1 x 6" kevlar, Tweeter: 25mm with waveguide	Subwoofer: 2 x 10"	Subwoofer: 2 x 10"
CONTINUOUS POWER HANDLING	150W at 8Ω	400W at 8Ω	600W at 8Ω
AMPLIFIER ENCLOSURE	Steel, powder coated	NA	NA
MAXIMUM SPL @ 1M	108dB	120dB	126dB
FREQUENCY RESPONSE (±2dB)	70Hz ~ 20kHz (-3dB)	40Hz ~ Crossover frequency	32Hz ~ Crossover frequency
COLOUR	Black	Black	Black
DIMENSIONS (HxWxD) mm	420 x 300 x 135	475 x 1125 x 185	537 x 1125 x 362
MOUNTING OPTION	Wall mount bracket (included)	Wooden stand	Wooden stand



SRT 101 CS



SRT 4200

DESCRIPTION	4 channel processor for SRT 101
FREQUENCY RESPONSE	Customised for SRT 101
INPUTS & OUTPUTS	4 x XLR balanced
INDICATOR	Power LED
THD + NOISE	Less than 0.01 %
GAIN	0dB
SIGNAL TO NOISE RATIO	100dB (A weighted)
DIMENSIONS (HxWxD) mm	44 x 482 x 165
ACCESSORIES	19" rack mounting

DESCRIPTION	Multichannel power amplifier
POWER: 4Ω	4 x 200W
POWER: 8Ω	4 x 120W, 2 x 200W (bridged)
THD AT RATED POWER	0.1%
FREQ. RESPONSE (-3dB) on axis	15Hz ~ 60kHz
INPUTS - ANALOG	4 x XLR with Link (also XLR)
CHANNEL SEPARATION	> 70dB
SIGNAL TO NOISE RATIO (ANALOG)	> 104dB
DIMENSIONS (HxWxD) mm	87 x 482 x 400

AVANT



AVANT T2



Avant is a premium passive speaker range. With focus on performance and build quality, it employs high-grade components throughout for transparent, highly detailed audio reproduction.

The range spells elegance. Slim and compact with subdued styling, they blend into modern interiors.

Three beautifully finished avatars appear in white, black, and silver.

With no compromise on performance, this range is ideal for both music and multichannel audio.



AVANT T2



AVANT S2



AVANT C2



AVANT C2



AVANT S2

TRANSDUCER COMPLEMENTS	2 x 6.5" high excursion woven PP woofer 1 x 4" kevlar cone midrange 1 x 1" silk dome tweeter	2 x 6.5" high excursion woven PP woofer 1 x 4" kevlar cone midrange 1 x 1" silk dome tweeter	2 x 4" PP cone woofer 2 x 1/2" poly cone tweeter
NOMINAL IMPEDANCE	8Ω	8Ω	8Ω
SENSITIVITY	88dB	88dB	88dB
FREQUENCY RESPONSE (±3dB)	40Hz ~ 21kHz	60Hz ~ 21kHz	60Hz ~ 22kHz
RECOMMENDED AMP POWER	50~200W/channel	50~200W/channel	50~150W/channel
COLOURS	White / Black / Silver	White / Black / Silver	White / Black / Silver
DIMENSIONS (HxWxD) mm	1064 x 200 x 305	250 x 520 x 252	320 x 375 x 162
NET WEIGHT	23kg	13.6kg	7.6kg

SONUS



SONUS 3165



This is a major upgrade to the very successful 2000 Series.

The key innovations lie in new enclosures that provide improved bracing, hand picked drivers that provide better frequency extension and transients, and brand new crossovers for better transparency.

The range features 2 tower speakers, 2 centre speakers, a bookshelf and 2 surround models. Two colour options are available.

The new Sonus range is built to a level of sonic performance that will set a new standard in music and home theatre listening.



SONUS 3165



SONUS 3155



SONUS 3260

TRANSDUCER COMPLEMENTS	2 x 6" woofer, 1 x 5" midrange 1 x 1" dome tweeter	2 x 5" woofer, 1 x 5" midrange 1 x 1" dome tweeter	1 x 6" woofer, 1" dome tweeter
NOMINAL IMPEDANCE	8Ω	8Ω	8Ω
SENSITIVITY 1W, 1M	92dB	90dB	89dB
FREQUENCY RESPONSE (-3dB), on axis	50Hz ~ 20kHz	60Hz ~ 20kHz	55Hz ~ 20kHz
RECOMMENDED AMPLIFIER POWER	60 ~ 150W	60 ~ 125W	60 ~ 100W
DIMENSIONS (HxWxD) mm	981 x 210 x 292	890 x 200 x 262	335 x 220 x 285
FINISH	Front: Ash; Outer skin: Option of Black ash or Rosewood	Front: Ash; Outer skin: Option of Black ash or Rosewood	Front: Ash; Outer skin: Option of Black ash or Rosewood
NET WEIGHT	19.2kg	15kg	7kg



SONUS 3360



SONUS 3350



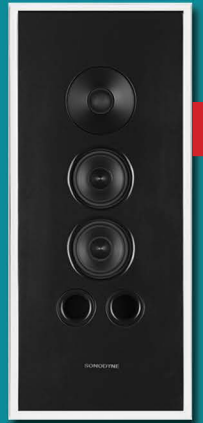
SONUS 3440



SONUS 3540

TRANSDUCER COMPLEMENTS	2 x 6" woofer, 1" dome tweeter	2 x 5" woofer, 1" dome tweeter	2 x 4" woofer, 2 x 1/2" dome tweeter	4" woofer, 1" dome tweeter
NOMINAL IMPEDANCE	8Ω	8Ω	8Ω	8Ω
SENSITIVITY 1W, 1M	90dB	90dB	88dB	85dB
FREQUENCY RESPONSE (-3dB), on axis	55Hz ~ 20kHz	65Hz ~ 20kHz	75Hz ~ 20kHz	80Hz ~ 20kHz
RECOMMENDED AMPLIFIER POWER	60 ~ 150W	60 ~ 125W	60 ~ 125W	60 ~ 100W
FINISH	Front: Ash; Outer skin: Black ash or Rosewood	Front: Ash; Outer skin: Black ash or Rosewood	Front: Ash; Outer skin: Black ash or Rosewood	Black
DIMENSIONS (HxWxD) mm	210 x 510 x 262	190 x 450 x 217	318 x 370 x 164	216 x 175 x 160
NET WEIGHT	9.8kg	7.9kg	8.9kg	3.2kg

I.W.O.





IWO is pure innovation. In modern homes with premium space, these exquisite loudspeakers virtually disappear. Slim (less than 4") they can be mounted on the wall, AND, using a proprietary mount, can also be mounted IN WALL. Using minimal internal volume, this range produces big, detailed sound. So while the IWO does not intrude into your space, it does add a new dimension to your sound.

The IWO range has 6 passive speakers and 1 powered subwoofer. The 501 is the smallest, and the 511, 512 are larger models employing a 2.5 way crossover. The 521 and 522 are centre speaker arrangements of the 511 and 512. The 531 powered subwoofer utilises a 6" transducer and 80W amplifier to deliver big sound from its compact, wall-mountable enclosure.



IWO 501



IWO 502



IWO 511

TRANSDUCERS	1" tweeter, 3" woofer	1" dome tweeter, 4" woofer	1" dome tweeter, 2 x 3" woofer
FREQUENCY RESPONSE	80Hz ~ 20kHz	70Hz ~ 20kHz	75Hz ~ 20kHz
NOMINAL IMPEDANCE	8Ω	8Ω	8Ω
SENSITIVITY	80dB	85dB	83dB
RECOMMENDED AMPLIFIER POWER	40 ~ 80W	60 ~ 100W	60 ~ 100W
COLOURS	White/ Black	White/ Black	White/ Black
DIMENSIONS (H x W x D)	285 x 210 x 98	350 x 220 x 98	500 x 220 x 98
NET WEIGHT	3kg	3.7kg	5kg



IWO 512



IWO 521



IWO 522

TRANSDUCERS	1" dome tweeter, 2 x 4" woofer	1" dome tweeter, 2 x 3" woofer	1" dome tweeter, 2 x 4" woofer
FREQUENCY RESPONSE	70Hz ~ 19kHz	75Hz ~ 20kHz	70Hz ~ 19kHz
NOMINAL IMPEDANCE	8Ω	8Ω	8Ω
SENSITIVITY	88dB	82dB	87dB
RECOMMENDED AMPLIFIER POWER	60 ~ 120W	60 ~ 100W	60 ~ 120W
COLOURS	White/ Black	White/ Black	White/ Black
DIMENSIONS (H x W x D)	630 x 220 x 98	220 x 500 x 98	220 x 630 x 98
NET WEIGHT	6.4kg	4.9kg	6kg

MICRO HTS



The Micro 3001 and 3002 are new satellite speakers. But don't let their small size fool you. These are serious speakers and they employ custom transducers and elaborate crossovers to provide a detailed sound that is loud and clear. The enclosure is ABS (moulded plastic) that gives the Micro a unique shape which blends into your living space. The products are sold separately or as a Micro HTS package with the rugged Roarr 1108. You may install the Micros using the keyhole slot or with universal brackets (included). So if you are looking for high quality music or cinema sound experience in your premium space, choose the new Micro from Sonodyne.



MICRO 3001

MICRO 3002

DESCRIPTION	2 way speaker , ported	2 way speaker , ported
ENCLOSURE	ABS	ABS
TRANSDUCER COMPLEMENTS: HF	0.5 inch polycone tweeter	0.5 inch polycone tweeter
TRANSDUCER COMPLEMENTS: LF	3 inch woofer	2 x 3 inch woofer
RECOMMENDED AMPLIFIER POWER	40 - 100 watt	40 - 120 watt
NOMINAL IMPEDANCE	8 Ohm	8 Ohm
SENSITIVITY (1 W 1M)	87 dB	90 dB
FREQUENCY RESPONSE (-3 dB)	100Hz - 20kHz	100Hz - 20kHz
FREQUENCY RANGE (-10 dB)	80Hz - 22kHz	70Hz - 22kHz
CROSSOVER FREQUENCY	6.5 kHz	3.5 kHz
INPUTS	Binding post	Binding post
COLOURS	Black / White	Black / White
DIMENSIONS (HXWxD)	171 mm x 100 mm x 108 mm	100 mm x 261 mm x 100 mm
NET WEIGHT	0.75 kg	1.3 kg
MOUNTING OPTIONS	Wall mount bracket (included)	Wall mount bracket (included)
PACKED IN	Pairs	Single

For detailed specifications, please visit www.sonodyne.com • Due to continuous improvements, all specifications are subject to change

SIC 3300



The SIC 3300 Series features high performance ceiling speakers for home theatre and channel music applications. Both models in the range are two way designs with an elaborate crossover for critical midrange detailing. The moulded plastic enclosure has an unique waveguide rendering appreciable SPL without loss in low frequency. The swivel tweeter can be aimed for higher intelligibility at the listening position. Compact, powerful and elegantly finished with a magnetic grill, the new 3300 Series blends into your ceiling and reproduces music and movie content efficiently.



SIC 3360



SIC 3380

DESCRIPTION	2 way in-ceiling speaker with magnetic grill	2 way in-ceiling speaker with magnetic grill
TRANSDUCERS	1 x 6" coaxial speaker	1 x 8" coaxial speaker
FREQUENCY RANGE (-10dB)	60Hz ~ 21kHz	45Hz ~ 21kHz
FREQUENCY RESPONSE (-3dB)	70Hz ~ 20kHz	55Hz ~ 20kHz
SENSITIVITY 1W/1M half space	91dB	92dB
SPL AT RATED POWER	105dB @ 30W	106dB @ 30W
NOMINAL IMPEDANCE	8Ω	8Ω
POWER HANDLING	60W	60W
OUTER DIMENSION (depth x dia) mm	120 x 241	142 x 280
CUT OUT DIMENSION mm	207	245
COLOUR	White	White
MOUNTS	Ceiling mount	Ceiling mount
GROSS WEIGHT	2.5kg	3.3kg



ROARR 1312



ROARR 1210



ROARR 1108

The new range of Roarr subwoofers build on the decade long Roarr legacy of providing cost effective high performance subwoofers. The new range offers three models, with the largest model (1312) sporting a 300W Class AB amplifier with a 12" high excursion transducer. The other models feature 8" and 10" transducer with 100W and 150W amplification respectively. All models feature variable phase and frequency control.

With oodles of power enclosed in a sturdy, smart enclosure, the new Roarr Series will bring you a lifetime of exhilarating audio.



ROARR 1108



ROARR 1210



ROARR 1312

	ROARR 1108	ROARR 1210	ROARR 1312
TRANSDUCER	1 x 8"	1 x 10"	1 x 12"
AMPLIFIER POWER	100W	150W	300W
INPUTS	L & R unbalanced RCA type	L & R unbalanced RCA type	L & R unbalanced RCA type
MAXIMUM SPL @ 1M	109dB	112dB	116dB
LF RESPONSE (-3dB)	30Hz	26Hz	24Hz
FINISH	Front: Ash; Outer skin: Black ash or Rosewood	Front: Ash; Outer skin: Black ash or Rosewood	Front: Ash; Outer skin: Black ash or Rosewood
DIMENSIONS (WxHxD) mm	330 x 330 x 429	375 x 358 x 416	390 x 390 x 514

SUB



SUB S1010



SUB S1012

Between the 4 models of SUBs, we have ideal low frequency reinforcement partners for the Reference Range of active speakers. The high excursion transducers are designed for long hours of performance with focus on loudness and low frequency extension without audible distortion. Each model has two channel bass management for optimal level and frequency balance with the main channels. While the amplifiers are Class D, the power supply is a hefty linear toroidal transformer to minimize noise while maximising headroom and reliability. Beautifully finished in matching colours with the main channels, these subwoofers are ideal both for music and multichannel application.



S1006



S1008



S1010



S1012

	S1006	S1008	S1010	S1012
TRANSDUCER	1 x 6"	1 x 8"	1 x 10"	1 x 12"
AMPLIFIER POWER	80W	80W	200W	300W
INPUTS	2 x RCA	2 x RCA	2 x XLR, 1 x RCA (LFE)	2 x XLR, 1 x RCA (LFE)
OUTPUTS	2 x RCA	2 x RCA	2 x XLR	2 x XLR
MAXIMUM SPL @ 1M	105dB	108dB	112dB	116dB
LF RESPONSE (-3dB)	44Hz	38Hz	34Hz	28Hz
COLOUR	Black/ White	Black/ White	Black/ White	Black/ White
DIMENSIONS (WxHxD) mm	270 x 270 x 320	310 x 310 x 360	350 x 420 x 450	400 x 400 x 555

DE 4348

The DE 4348 is a high performance multichannel processor that forms unique packages with Sonodyne active speakers. It is also very useful in custom installation for mini cinemas and corporate boardrooms

- HDMI/4K (2160 x 3840)
- High performance preamplifier with 7.2 unbalanced & balanced output
- Low magnetic flux leakage massive toroidal transformer
- On screen display (OSD)
- RS 232 control
- 32 bit (TI, CO.) DSP decoding: Dolby TrueHD/ Dolby Digital Plus/ Dolby Digital/ DTS-HD Master Audio/ DTS ES

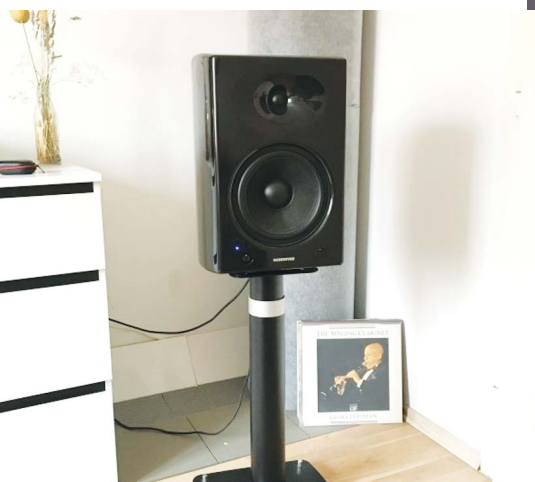


“ Sonodyne are already well ahead on their journey to become one of the most successful manufacturers in their space. ”

~ Santhosh M, HiFi Today

“ I love Sonodyne. I love the quality of the product for the price you pay, they never let me down, you have to find your Sonodyne product for your own taste but you will never find a better product for the price. ”

~ George Necola, Gearslutz



“ As the crown jewel of the Indian hi-fi manufacturing industry, Sonodyne has been at the top of its game for a while now. ”

~ What HiFi?



HAVE YOU TRIED SONOGUIDE



Let us help
you find the
perfect
audio system

www.sonodyne.com/sonoguide



SONODYNE, H.O.: 98 NB Block E New Alipore, Kolkata 700053, INDIA | T: 1-800-123-37-36
response@sonodyne.com | www.sonodyne.com

Visit SONODYNE INDIA for exciting offers and promotions

